

Countywide Trails Initiative Minutes

Tuesday, April 16th, 2024, 4:30 pm

50 W. High Street, Ballston Spa, NY 12020

Attendees:

Charlie Dake – Saratoga PLAN, Trail Committee chair, PLAN board member

Bonnie Nightingale– Saratoga PLAN, Stewardship manager

Barbara Kerr – Town of Milton, Councilwoman

Mary Ann Morgan – Town of Milton, resident

Kim Lambert – Saratoga County Planning

Jeff Williams – Saratoga County Planning

Ted Orosz – City of Saratoga Springs

Ken Grey – City of Saratoga Springs

Bill Herman – Town of Halfmoon Trails and Open Space Committee, PLAN board member

Jim Ruhl – Town of Clifton Park, Open Space and Trail committee

Scott Miller – Town of Clifton Park, resident. PLAN advisory council & Cons. Cmte

Sallie Way – Friends of Saratoga Horse Trails

Anna Lalve – Saratoga Trails Alliance

Ed Snyder – Greenman Pedersen

Tony Tozzi – Glenville, NY, Director of planning

- Saratoga County
 - Zim Smith: Greenman Peterson (GPI) has been awarded to contract to begin work on the Oak street to Saratoga Spa park trail extension. They are currently conducting property owner outreach along the preferred route.
 - The feasibility study was done in August 2021 (also by GPI). Entitled : Zim Smith Trail – Northern Extension Feasibility Report. Available from county planning. Segments 1, 2a/2b,3 and 4a are the preferred route.

- 2024 County Trail Grant application due June 28, 2024. Total of \$100k available, \$10k per town maximum. <https://www.saratogacountyny.gov/wp/wp-content/uploads/2024/03/Planning-SC-TrailsGrantApplication-2024.pdf>

- Milton
 - Woods Hollow, transfer between village and town currently tied up in state legislature. State legislation is needed as the land is classified as park.
 - Stone church parcel, about 30 acres complete with trails. At the NW corner of Route 29 and Stone Church road. Owner wants to donate to town. Issues regarding appraised value.
 - Boice Park expansion dead. Parcel no longer available. Project 3 on trail master plan.
 - Town is working with CDTA on design improvement to the “Town center connection”: where Geysers crest trail meets Rowland Street.
 - See town map of open space/trail priorities: (page 5 map)
 - https://cms8.revize.com/revize/miltonny/Document_center/Committees/Open%20Space/2022%20Town%20of%20Milton%20Trail%20Master%20Plan.pdf

- State Parks (no representatives)
 - Discussion about Big Bend property and coordination with town of Moreau proposed multiuse trail. Casey Holtzworth, Phil Corney were implicated as coordinating with town of Moreau.

- Saratoga PLAN
 - Palmerton Range. Closed on north south Witt easement – PLAN now holds the easement. Not open to public. This is the main ridge easement between Lincoln mt state forest and Lake Bonita. <https://saratogaplan.org/wp-content/uploads/2021/05/PalmertownGraphicMap2020.04.23.pdf>
 - Graphic Range grand opening in about 2 weeks – invite only.
 - Ballston Creek preserve: Town of Ballston grant for parking area on west side of Eastline road. Design approved by planning board. Should be open by summer.

- Saratoga springs.
 - A couple of complete streets projects underway including Railroad run north connector to downtown.
 - Working to move Crescent avenue trail forward. Some landowner concerns. At least not revolutionary soldiers in the cemetery.
 - Glen Mitchell trail, a multiuse trail concept from Broadway north through Skidmore woods to Glen Mitchell School on Route 9. Guestimates of \$400-700k. Some communication with town of Wilton regarding linkage. Reference Saratoga Greenbelt Trail map - <https://www.saratoga-springs.org/DocumentCenter/View/11746/2020-07-21-Saratoga-Greenbelt-Trail-SGT-Map> Trail would involve Wilton, and possibly Greenfield.

- Halfmoon
 - Engineering GIS mapping of all trails in town is underway.
 - Rerouting of the Clifton Park canal connector trail off road (follows Mohawk River between Twin Bridges and Crescent route 9 bridge) – engineering design funded.
 - Nature preserve off Vosburgh road trail upgrades underway, part of community trail plan. https://www.townofhalfmoon-ny.gov/sites/g/files/vyhlif4491/f/uploads/town_of_halfmoon_trails_map_0.pdf
 - North connector to Zim smith – in plan for subdivision of Rucinski parcel: developer responsible for path construction. Connects Staniak Road with Zim Smith about halfway between Coons Crossing and Elizabeth Street.
 - NG powerline trail – east west across southern tier: From near Momentive to near Twin Bridges. NG is seeking federal money to the ROW improvements and is acting amenable to trail development. Town of Halfmoon has issued an official resolution in support of the project including trail development. https://www.townofhalfmoon-ny.gov/sites/g/files/vyhlif4491/f/agendas/february_21_2024_agenda.pdf

- Wilton
 - Recent Wilton Parks and Recreation Commission meeting – report out at next trails meeting.

- Greenfield
 - No progress on tupelo forest parking/access.

- Clifton Park.
 - Connection to regional trails is priority.
 - Western connections including Ballston/Clifton Park/Glenville need attention.
 - Zim Smith off road connection from Exit 10 - no progress. Wood Road is defacto connector.

- Friends of Saratoga Horse Trails.
 - Big bend trail connection is priority – crossing to county property across Butler Road current focus

- Schuylerville
 - Schuylerville has been designated a Trail Community on the Empire/Champlain canalway trail system. This is a Parks and Trails NY/ Canalway program. Read more about trail communities: <https://www.ptny.org/our-work/support/canalway-trail-partnership/empire-state-trail-towns>

- MISC
 - NYS DOT contact used by Saratoga Springs.

Lorenzo Distefano

lorenso.distefano@dot.ny.gov

518.485.1715

Countywide trail meeting Map supplement

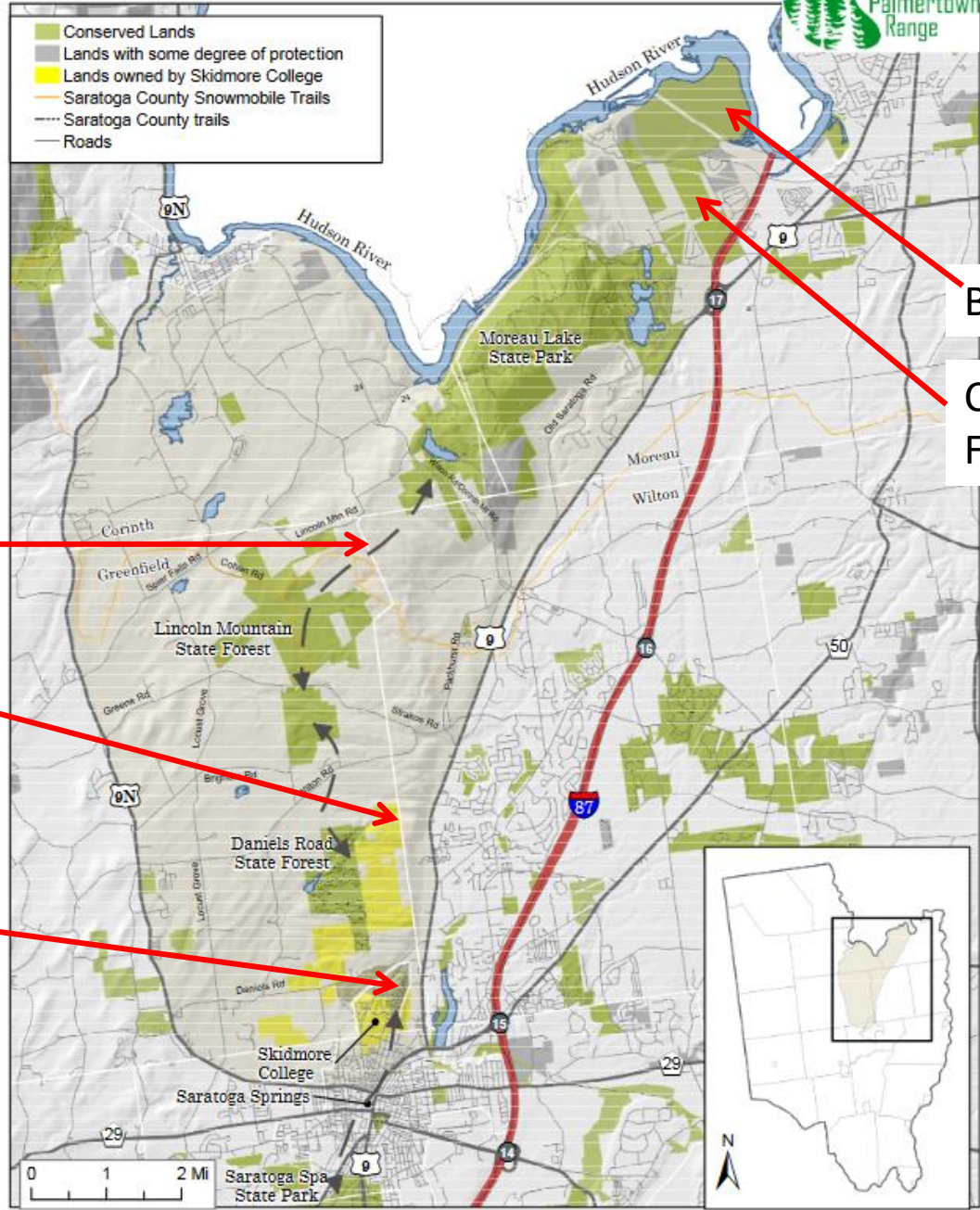
April. 16, 2024

Maps illustrate general areas of discussion

Specific, actualized or official trail plans are not implied

- Moreau, Palmerton range area
- Milton and Ballston Spa village
- Halfmoon
- Saratoga Springs

Palmertown Conservation Area



Moreau, Big Bend, county forest, Palmerton range.

Big Bend
County Forest

PLAN Witt Easement area

Graphite range

Glen Mitchell

Big bend area
Detail

Brookfield power

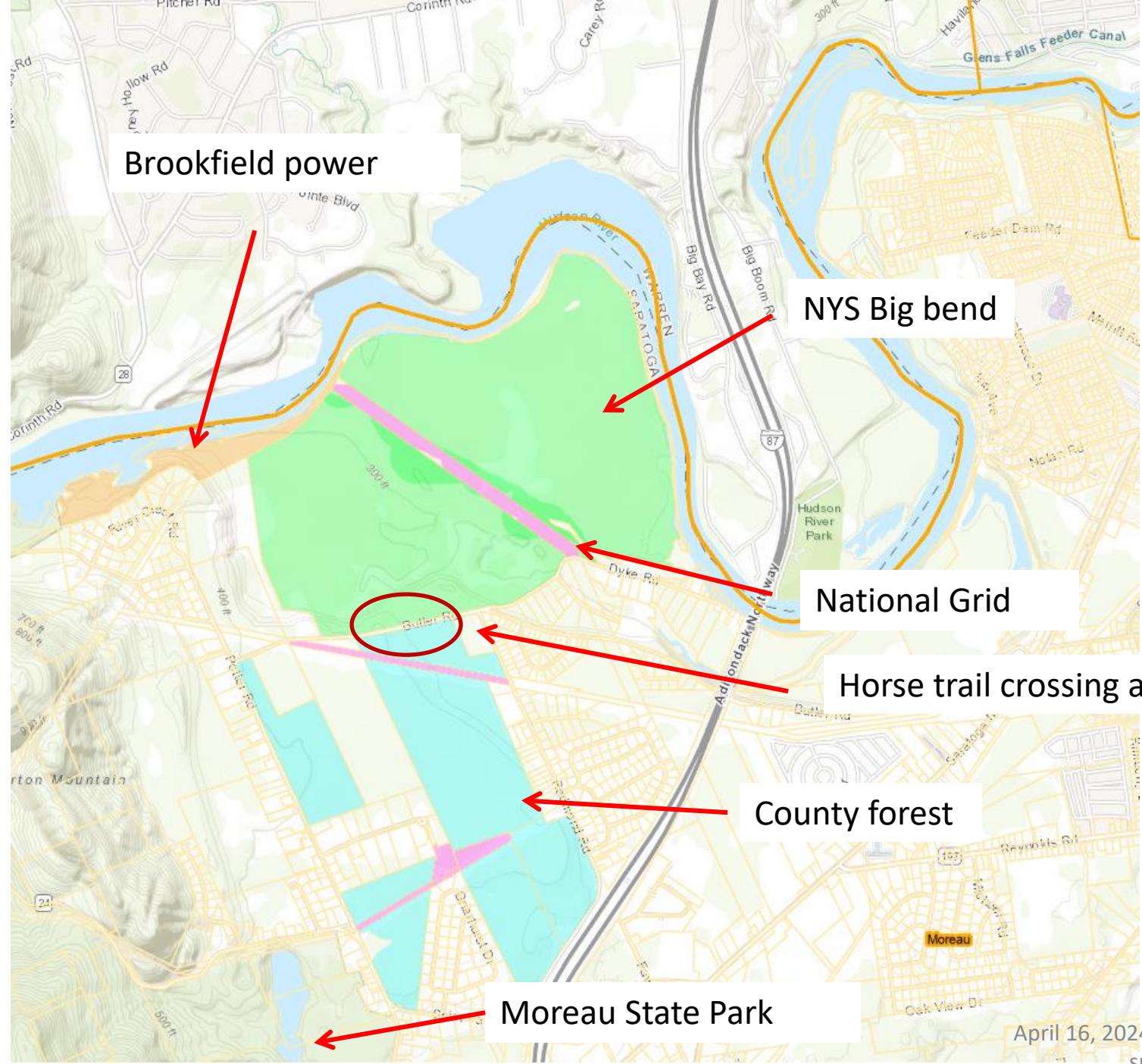
NYS Big bend

National Grid

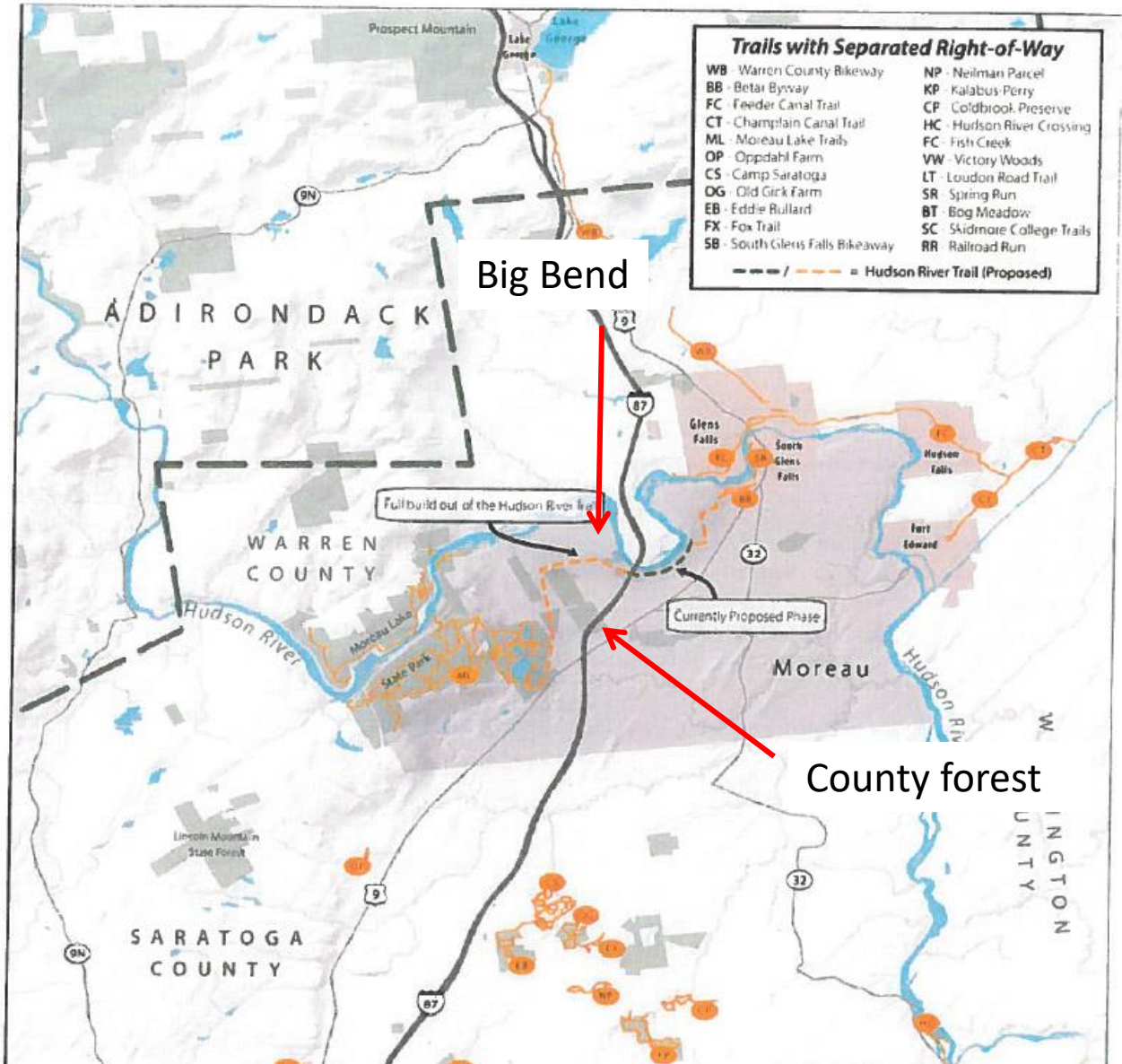
Horse trail crossing area

County forest

Moreau State Park



Regional context:
Big bend, Moreau
state park and
Moreau river trail
concept



Milton Projects

Town center connector

Stone Church Parcel

LEGEND

Priority Area

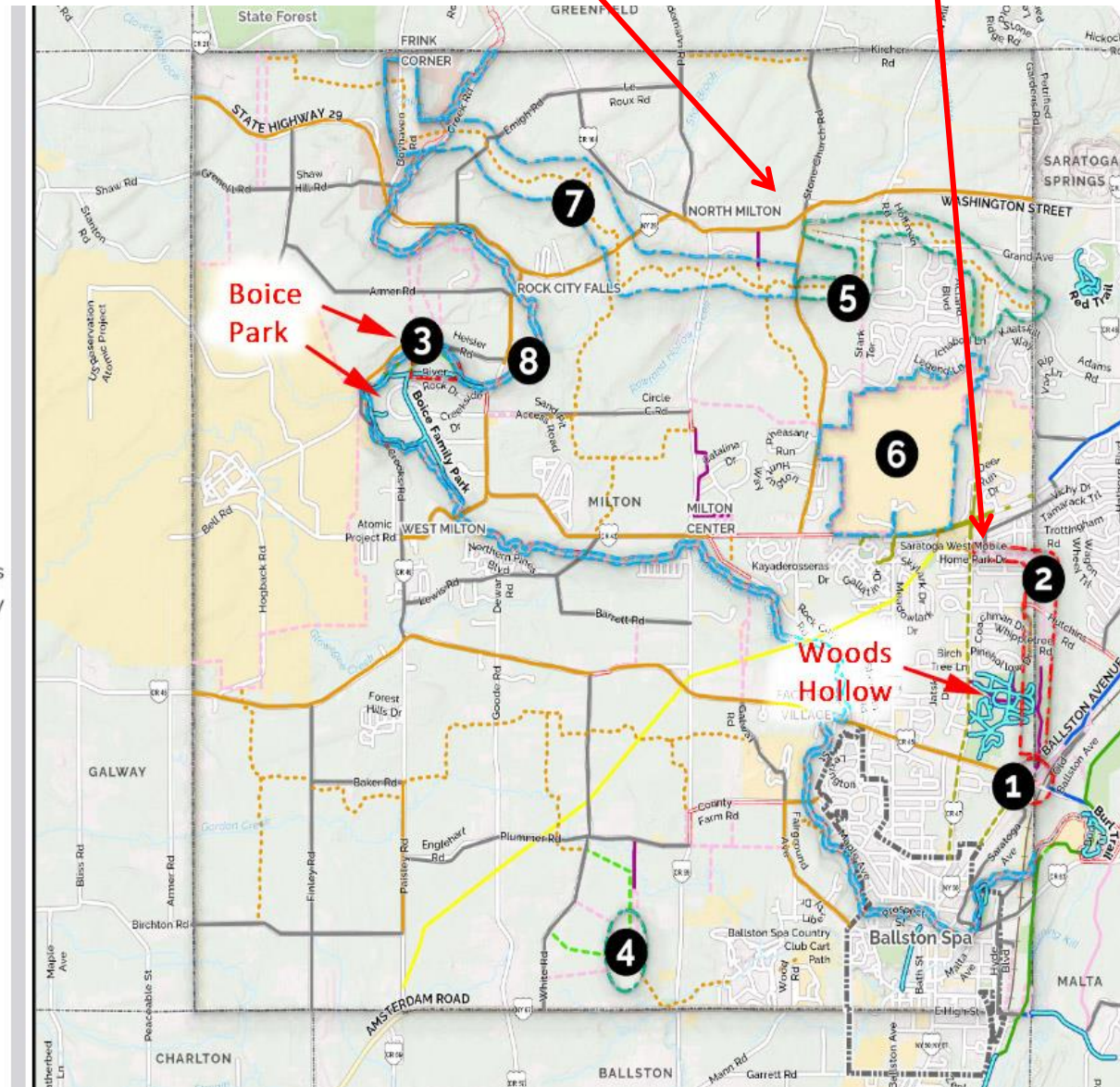
- Immediate
- Short Term
- Long Term

2022 Trail Master Plan

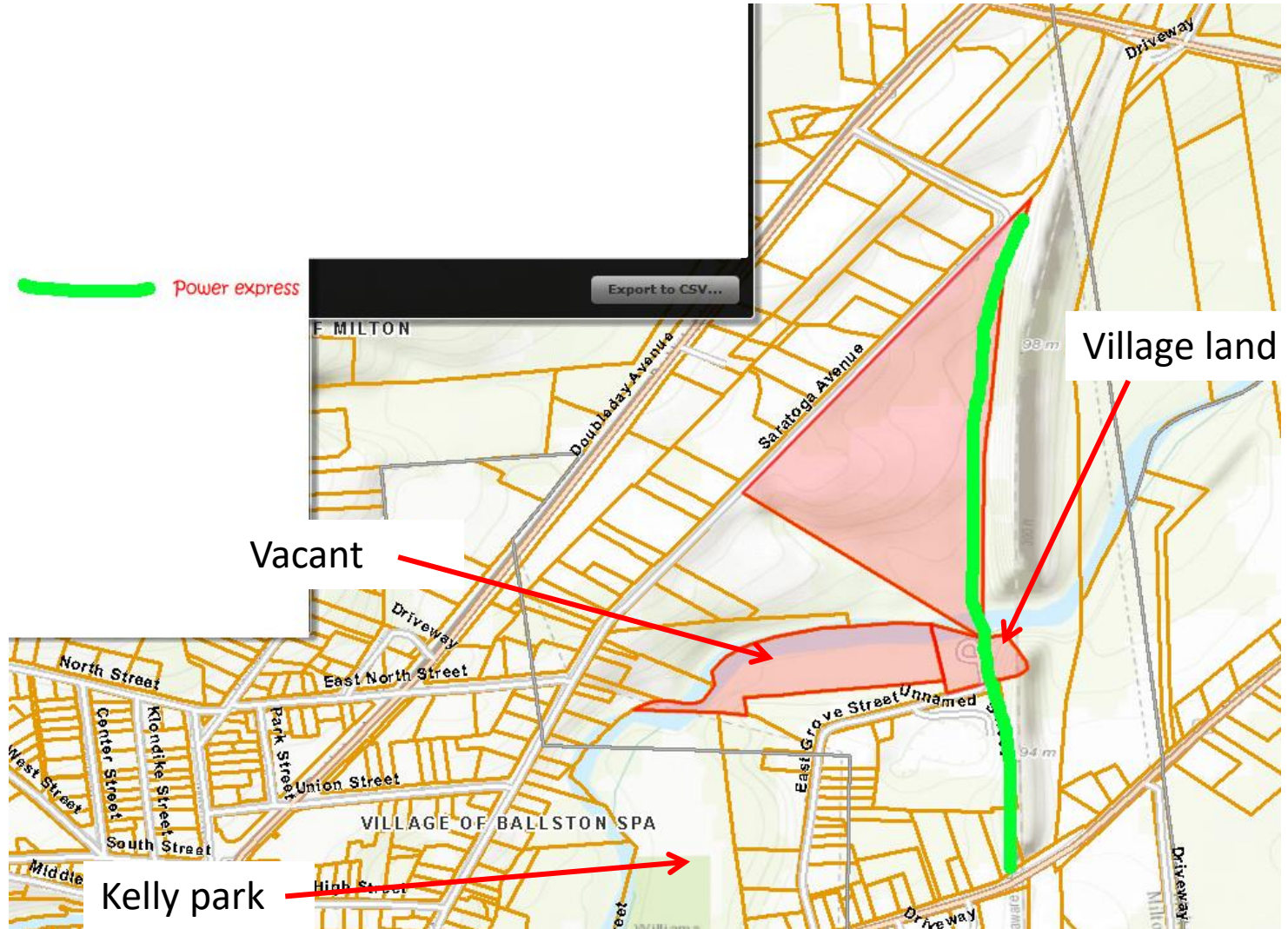
- Potential Off-Road Connection
- Potential On-Road Connection
- Saratoga County Trail

Existing Proposals

- Preferred Route Secure ROW
- Preferred Route Unsecure ROW
- Alternate Off-Road: Secured ROW
- Alternate Off-Road: Unknown Status
- Alternate Off-Road Unsecured ROW
- On Road
- On Road Separate Path
- Separate Path
- National Grid Line
- Proposed Sidewalk
- Sidewalk
- Unimproved Railbed
- Kayaderosseras Creek Greenway



Power Express (CHPE) ROW in Milton/Ballston Spa (2016)

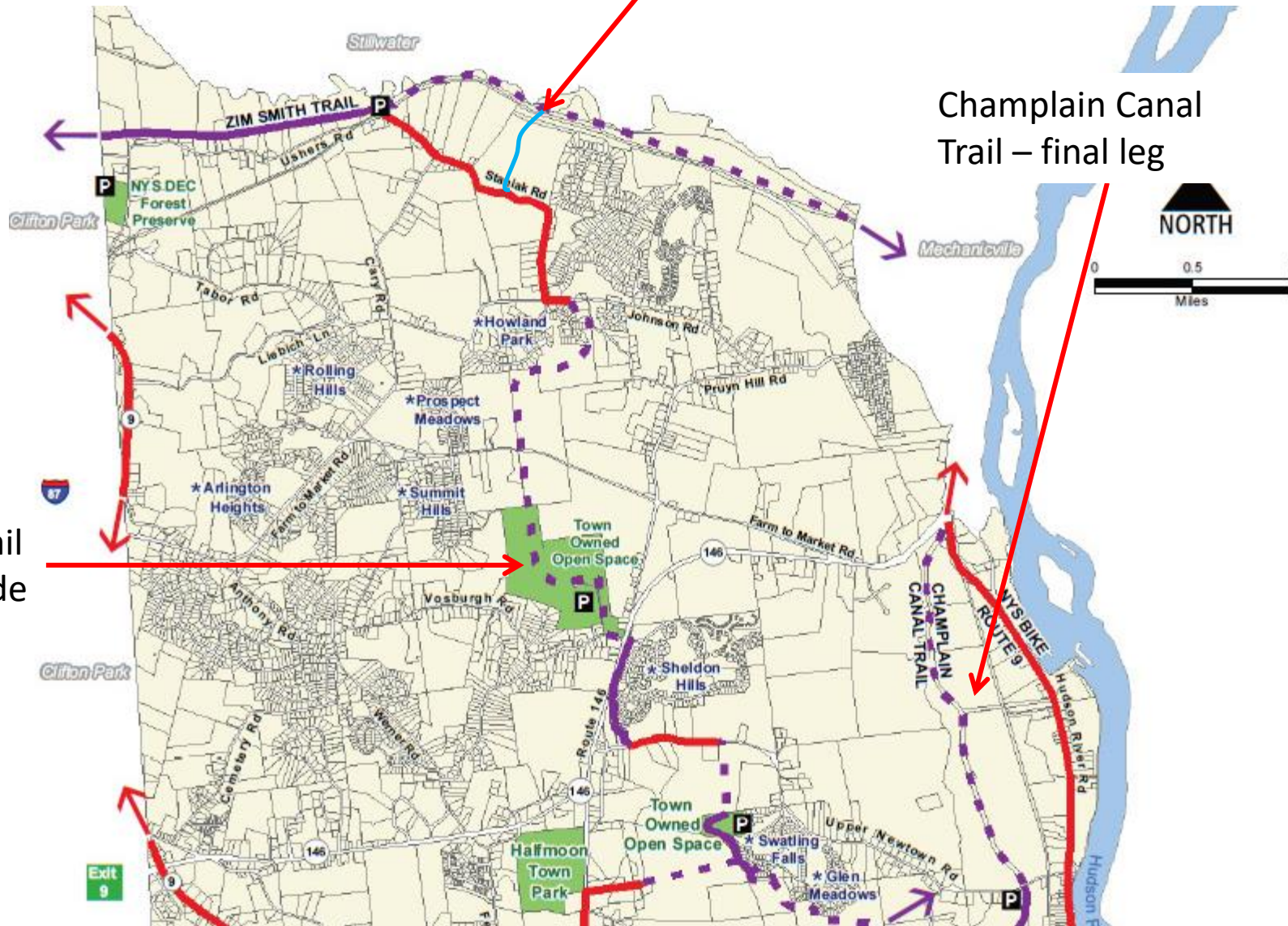


April 16, 2024 Trail Committee map supplement

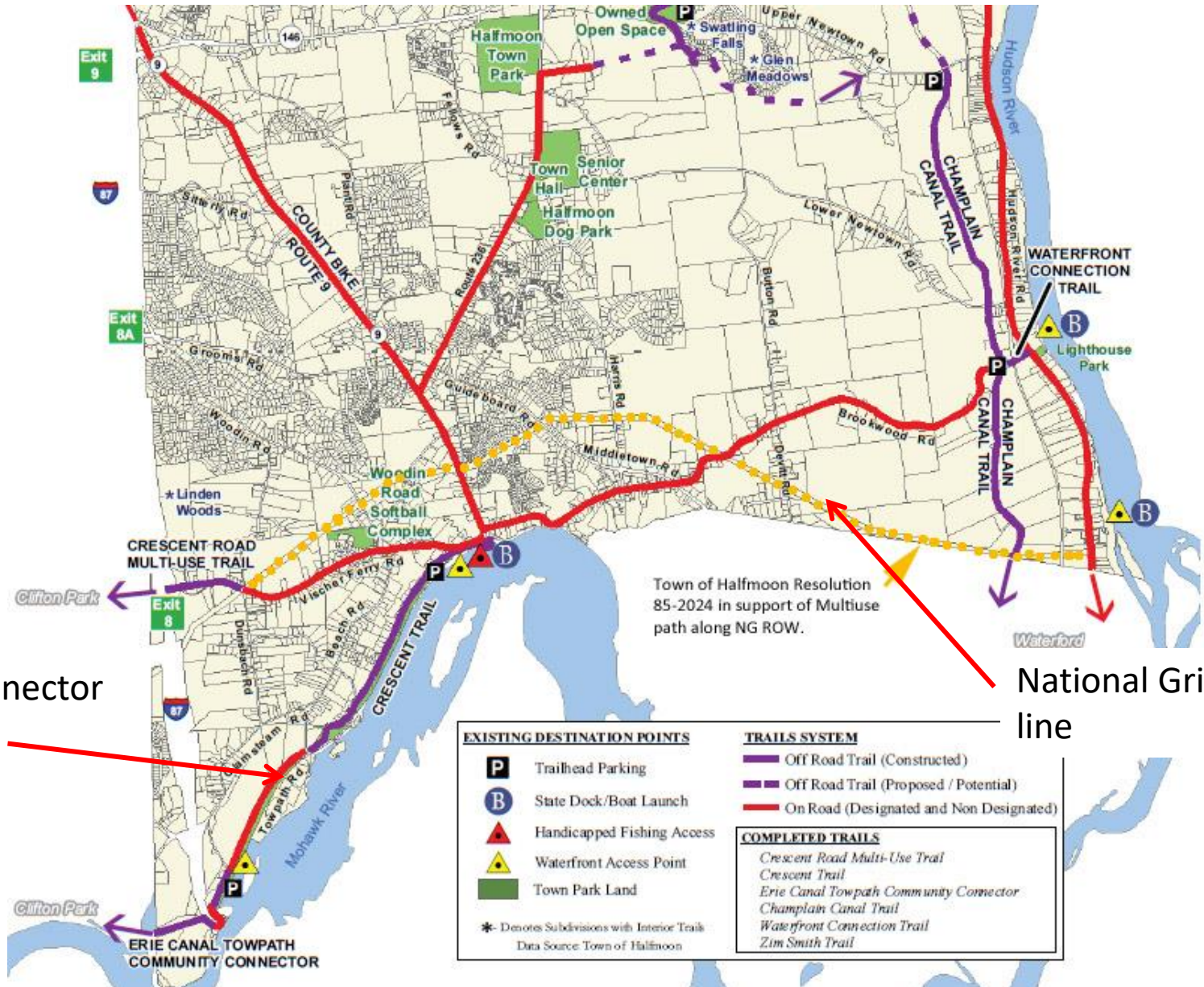
Zim Smith Connection

Champlain Canal Trail – final leg

Vosburgh trail work/upgrade



Halfmoon Projects – pg 2



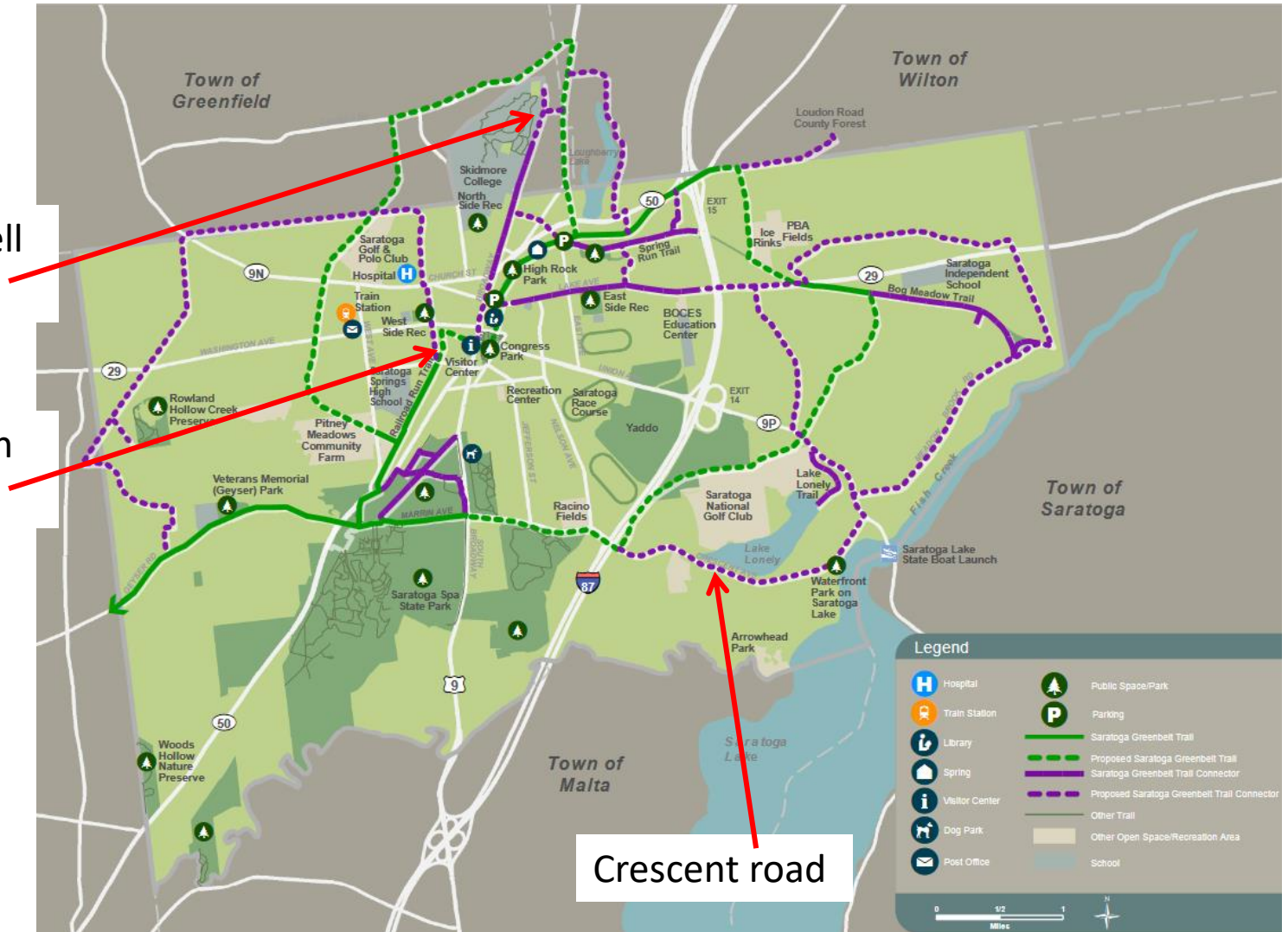
Canal connector trail

National Grid Power line

Saratoga Springs

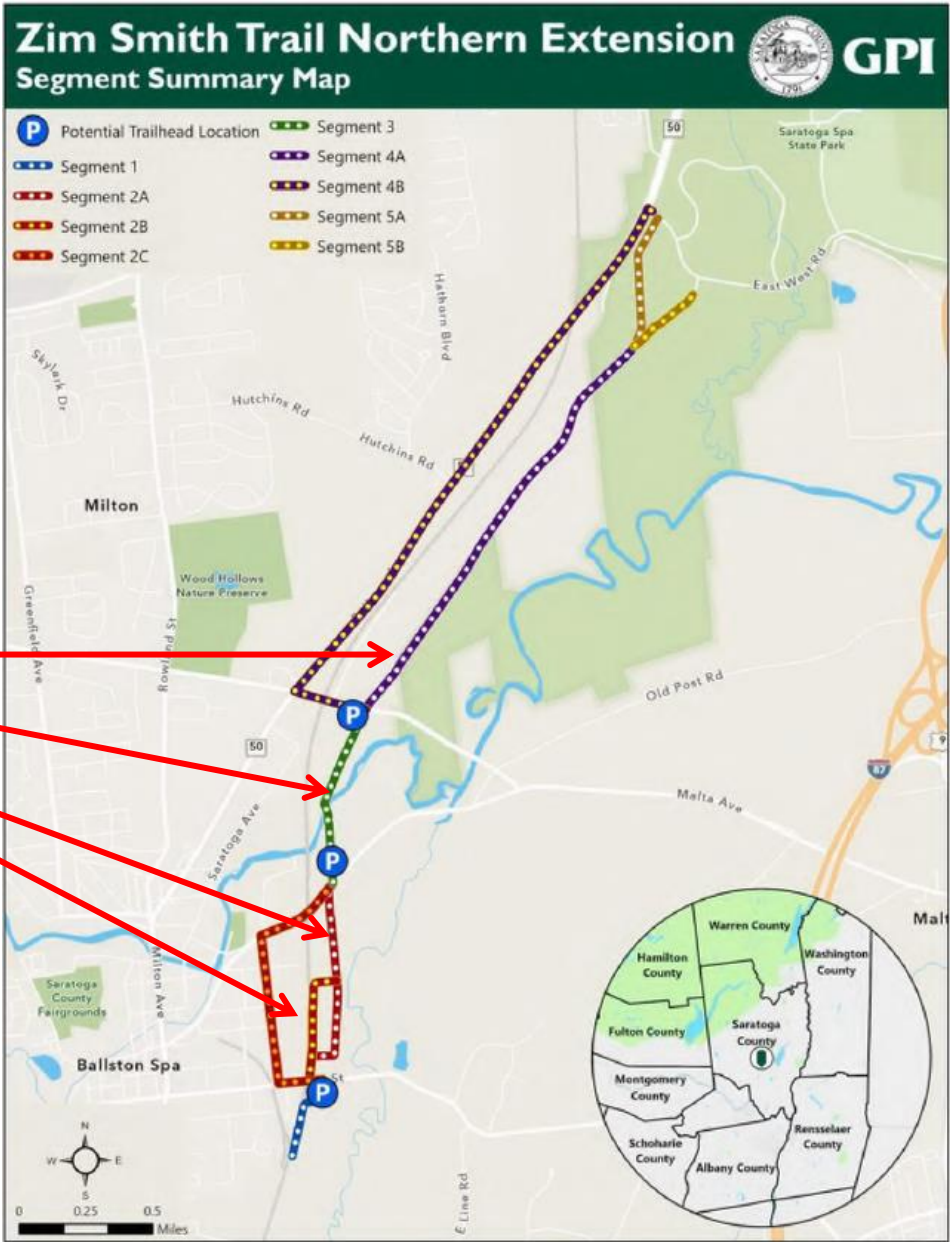
Glen Mitchell trail

Railroad Run connector



Crescent road

Zim Smith North
2021 feasibility study



Preferred segments

