

WELCOME TO ROUND LAKE PRESERVE!

The Round Lake Preserve is a perfect example of multiple types of open space coming together for the benefit of the public. Visitors of the preserve can enjoy the waters of Round Lake and the Anthony Kill, the wetlands that surround them, as well as protected natural forest buffers and active farm fields.

What is Letterboxing?

Letterboxing is an old English tradition dating back to 1854 when people began leaving a self-addressed postcard or note in a jar, hoping for them to be returned by mail by the next visitor. Today we've adapted this English tradition and put it to use on Saratoga PLAN's nature preserves and trails. Each preserve has a letterbox ranging in difficulty for participants and gives each type of adventurer an exciting opportunity to explore our preserves and have fun while doing so. **When you find the letterbox, feel free to take a postcard, and mail it back to us with your comments about your journey. You can also take the stamp from within the letterbox and mark your PLAN Preserve Passport on the appropriate page (Passports are available from the Saratoga Plan office on Spring Street, or can be printed from the Saratoga PLAN website). Once you have collected at least five stamps (or listed three species observed during each visit) stop by PLAN's offices in Saratoga Springs for a FREE Saratoga PLAN t-shirt!**

We hope you enjoy your letterboxing experience at the Preserve! Interspersed within the clues *in italics* are observations and questions to enhance your trail experience.

LETTERBOX CLUES FOR ROUND LAKE PRESERVE

1. **After parking, proceed down the dirt road to the dock and viewing platform.**

Be sure to stop and read the interpretive signs along the northern side of the trail and dock!

2. **Follow the dock to the viewing platform, noticing the many different types of plants and insects along the edge of the water.**

How are the insects using the plants? How do the plants benefit from the insects? Where will the insects go once the plants die back in the fall?

3. **Can you use the sun to determine which direction is north? You'll find the letterbox on the northern outside rail of the viewing platform.**

Hint: the interpretive signs are on the northern side of the rail.

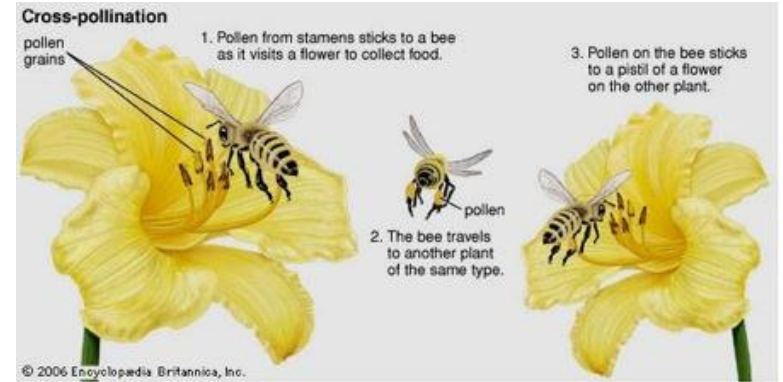
GREAT WORK!

We hope you enjoyed your letterboxing adventure at the Round Lake Preserve.

Thank you!

- Your Friends at Saratoga PLAN

The mission of Saratoga PLAN is to preserve the rural character, natural habitats and scenic beauty of Saratoga County so that these irreplaceable assets are accessible to all and survive for future generations. To learn more, please visit us at www.saratogaplan.org.



saratoga
PLAN

Preserving Land and Nature

Address:
112 Spring Street
Saratoga Springs, NY 12866

Phone: 518-587-5554

Email: info@saratogaplan.org

www.saratogaplan.org

Open M – F, 9AM to 5PM

nationalgrid

Thank you for generously
funding the Passport Program!