



# connections

SARATOGA PLAN 2017 ANNUAL REPORT



saratoga  
PLAN

Preserving Land and Nature



## Board of Directors

Jaclyn Hakes, Chair  
Will Orthwein, Vice-Chair  
Jane Mastaitis Treasurer  
Jay Arnold, Secretary  
Phyllis Aldrich  
Jennifer Hunt Dempsey  
Seth Simrall Dunn  
Fil Fina III  
Richard Higgins  
Kathleen Mannix  
John Munter, Sr.  
James Sevinsky  
Lorraine Skibo  
Billie Taft-Sitler  
Karen Totino  
James T. Towne, Jr., Esq.  
Genevieve Trigg, Esq.

## Staff

Maria Trabka, *Executive Director*  
Miike Horn, *Conservation Director*  
John Kettlewell, *Constituent Engagement Director*  
Gregory Redling, *Stewardship Coordinator*  
Dana Kear, *Program Assistant for Operations*  
Michelle Hall, *Program Assistant for Development*

## Emeritus Board

Tim Barnett  
Peter R. Brooks  
John Colley  
Barbara L. Glaser  
Lisa Nagle  
Brad Oswald  
Ray Seymour  
Julia S. Stokes

## Advisory Council

Barbara Faraone  
Michael Gaige  
Joe Grasso  
Charles Hanehan  
Scott Miller  
Jeff Olson  
Libby Smith-Holmes

## Volunteers

Phyllis Aldrich  
Kraig Armstrong  
Jay Arnold  
Andria Avellino  
Nichole Baldwin  
Tim Barnett  
Benjamin JW Baskin  
Jacqueline Bave  
Jack Beck  
Cynthia Behan  
Jana Benedict  
Frank Berlin  
Nancy Berlin  
Rick Bievenue  
Joyce Bixby  
Travis Blackmer  
BOCES Culinary Arts  
Mathew Bolton  
Jaya Borgatta  
Geoff Bornemann  
Lynn Bradley  
Vivianne Bramer  
Kate Brittenham  
Peter Brooks  
Kate Brown  
Jacqueline Carames  
Claudia Carmen  
Suzanne Carreker-Voigt  
Milda Carroll  
Elaine Caruso-Roberts  
Mark Cassier  
Daniel Chessare  
Darlene Chorman  
Jim Chorman  
Chrissy Colley  
John Colley  
Mary Jo (MJ) Collins  
Bruce Cranston  
Carol Curran  
Lesley Cutting  
Charlie Dake  
Mafoe Davis  
Cara DeCusatis  
Kim Dellis  
Scott Dellis  
Kara Dempsey  
Norah Dempsey  
Regina Doi

Jacqueline Donnelly  
Judy Drake  
Nancy Dwyer  
Linda Eastman  
Kate Edwards  
Wallace Elton  
Emily Errico  
Barbara Faraone  
Kendra Farstad  
Peter Fedorick  
Maria Ferrer  
Fil Fina, III  
Jeff Finkle  
Cathy Fleming  
Joshua Flint  
Emma Flynn  
Christa Franzi  
Robert Fraser  
Barbara Frasier  
Diane Friedel  
Erica Fuller  
Miyoko Fulleringer  
Mary Gage-Los  
Michael Gaige  
Elinor George  
Bob Gerber  
Marylou Geren  
Kati Gilbert  
Sue Ginouves  
Carol Glansberg  
Barbara L. Glaser  
Nancy Glover  
Jim Gold  
Alana Gorman  
Joseph Grasso  
Thomas Gulbrandsen  
Jaclyn Hakes  
Dylan Hall  
Kym Hance  
Charles Hanehan  
Allison Hargrave  
Anita Harris  
Tom Harris  
Sally Hart  
Ruth Hays  
Ann Henderson  
Barbara Hehnig  
Kelsey Hermann  
Richard Higgins  
Michael Hinrichs

Jim Hodsoll  
Jean Holcomb  
Jess Holmes  
Casey Holzworth  
Brian Homicz  
Joseph Hovis  
Jenn Hunt Dempsey  
Melina Iacovone  
Larry Isfelpel  
Barbara Jefts  
Hiika Joslyn  
Keith Kaplan  
Nick Karoly  
Dana Kear  
Ralph Keating  
Ashley Keatley  
Benjamin Kemp  
Pam King-Hall  
Rich Kinney  
Margaret Kinosian  
Laura Kipper  
Dan Kirkpatrick  
Mary Knutson  
Jen Koval  
Norm Kuchar  
Tammy Kulpa  
Bill Lasher  
Joanna Lasher  
Steve Lashomb  
Paul Laskey  
Ashley LeClaire  
Mieka LeClair-Lundy  
Tony Leva  
Brittany Lindenmayer  
Trish Lyell  
Justine Lyons  
Jerry MacDonald  
Kathy Mannix  
Jeffrey Mapes  
Brittany March  
Loretta Martin  
Jane Mastaitis  
Carol Maxwell  
Richard Maxwell  
Joan McGee  
James McKnight  
Gina Michelin  
Mark Miller  
Scott Miller  
John Mitchell

Ulissa Monroe  
Alexandra Morgan  
Hilary Moynihan-Loyola  
John Munter  
Pat Murphy  
Greg Myers  
Lisa Nagle  
Thomas Nelson  
Stephanie Newman  
Bonnie Nightigale  
Mary Alice Nyhan  
Will Orthwein  
Maxwell Owens  
Gail Palmer  
Michelle Paquette-Deuel  
Rosalie Parillo  
Christopher Parker  
Jacqueline Parker  
Ralph Pascucci  
Ray Pasieka  
Palma Pendrick  
Ron Pendrick  
Ken Perez  
Trish Perrault  
Katie Petronis  
Michael Phillips  
Marc Plessis  
Chris Poirier  
Jael Polnac  
Judson Potter  
Casey Putnam  
Mary Ellen Putnam  
Randy Putnam  
Sarah Quandt  
Mick Ramsey  
Braden Reardon  
Hannah Redman  
Arlene Rhodes  
Harold Rhodes  
Joan Roger  
Ray Rose  
Amy Rosoff  
Ricky Russell  
Gordon Sacks  
Kristin Salisbury  
Clifford Samson  
Marianne Sandy  
Kelly Sanford  
Julie Sanzen  
Jay Saunders

Jean Scammacca  
Kathleen Schnitzer  
Anne Schwartzman  
Jim Sevinsky  
Raymond Seymour  
Ian Shiland  
Brian Skanes  
Lorraine Skibo  
Amy Smith  
Dan Smith  
Dave Smith  
Nathaniel Smith  
Libby Smith-Holmes  
Alison Spencer  
Kent Stanton  
Leah Stein  
Pat Stephan  
Julia Stokes  
Jessica Street  
Cynthia Sullivan  
SUNY Adirondack Culinary Arts  
George Szlasa  
Billie Taft-Sitler  
Jen Thorne  
Steve Thorne  
Karen Totino  
James Towne  
Genevieve Trigg  
Mike Triller  
Thomas Uncher  
Mary Caroline Van Der Veer  
Joe Viva  
Ed Von Seggern  
Don Wall  
Takeyce Walter  
Donald Washburn  
Greg Way  
Emily Weaver  
Kurt Weiskotten  
Bryan Whalen  
Cynthia Whalen  
Gerd Wiesenberg  
Wildwood Programs  
Dawn Wood  
Jeff Wood  
Marilyn Zaboreck  
Bill Zona  
Laura Zullo



## Connecting the dots between land and people

In December 2017 Saratoga PLAN presented Conservation Hero awards to seven landowners and the City of Saratoga Springs in recognition of their valuable contributions to conserving 1,041 acres of land in Saratoga County. The Conservation Heroes included landowners, farmers, and elected officials who believe that maintaining and strengthening connections with the land we all love helps our county and our communities thrive.

Many noteworthy connections were made with these land projects. Don Carpenter's 89 acres and Dusty and Arlene Rhodes' 23 acres will connect with existing conserved properties to expand the Milton-Rhodes Preserve in the Town of Galway. New trail systems will be built to connect these beautiful lands, and eventually they may form part of the Long Path, connecting New Jersey to the Adirondacks.

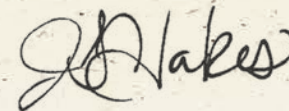
Each farm protection project PLAN completes serves to connect local communities to their local landscape, and later to food grown on fields you see as you drive to work or school. A community that can see its food being raised or harvested by people they know develops deep connections to the land and each other. When you can purchase healthy food from someone you know, who cares as deeply as you do about place, we all win.

Each new connection means more opportunities for making even more connections, which is why our projects are growing in scope and scale. In 2017, the Palmertown Conservation Area was a focus of PLAN.

We led many community events to educate and inform the community about their connections to this beautiful landscape, extending from Saratoga Springs north to Moreau Lake State Park. At a community workshop in December, PLAN and partner the Open Space Institute connected community members, interest groups, local leaders, and anyone interested to gather ideas on the best way to connect the various public and private lands in the Palmertown Area. PLAN is actively scouting trail connections that will soon allow anyone to hike from one end to the other, with options for multiple uses that will connect local community members to the land.

In recognition of the growing scale of community land preservation needs in the county, PLAN is expanding its capacity in 2018 with the hiring of a Conservation Director. The director will spearhead PLAN's efforts to take on more and bigger land protection projects. The success of these projects will continue to strengthen connections between communities and community members. We hope you will join us in supporting these connections and in Preserving Land and Nature in Saratoga County. Let's get to work!

JACLYN HAKES, CHAIR





## Making connections between people and the land



“They are true stewards of the land.”

—MARIA TRABKA

**Saratoga PLAN’s logo includes the tag line, “Preserving Land and Nature,” but that is only one-half of our story.** Every land project comes complete with valuable lands, farms, nature, wildlife, and environmental qualities that make it important to preserve. However, these qualities must first be identified and recognized by you, the people who own the land, the people who support the farmers who work the land, the hikers who explore the land, the communities that host the land, and the families that live on the land and nurture it.

That connection to the land we all have is what powers Saratoga PLAN, and is why strengthening these connections is so important to us. When a landowner comes to PLAN asking how we can help they always talk about how much they love their land and how they want to preserve it for future generations. Yes, there are many hurdles to cross to get there: costs, regulations, compromises, paperwork, delays. But, each landowner’s love for their land powers them through the process, and inspires us to work equally as hard to make it happen.

Conservation is not a one-way street. Conserving land is a complex transaction, and takes time, effort, expertise, and money, but these necessary steps result in an investment with compounded returns — in perpetuity. The dividends include farm-fresh food, clean air and water, natural recreational opportunities resulting in healthier families, and maybe just a moment or two of peace after a hectic day at work. These one-time investments, though, deliver benefits every year thereafter because conservation is permanent. The rewards for this hard work are endless, and they wouldn’t happen without landowners extending their connection with the land to future generations.



left to right:  
Dusty Rhodes  
Arlene Rhodes  
Joanne Yepsen  
David Bowman  
Dawn Szurek  
Don Carpenter  
Alice Farnsworth  
Neil Roberts  
Cathy Roberts  
Maya Vanderhorst  
Gary Vanderhorst  
Anne Vanderhorst  
Leah Vanderhorst



## 225 Acres preserved in 2017

PLAN's land projects in 2017 are prime examples of how this connection to the land benefits us all. Three projects were closed, totaling more than 225 acres of cherished land added to more than 4,355 acres of lovely land that will be conserved in perpetuity. And, we're working on 13 more land projects encompassing 1,750 more acres in 2018!

## More dots being connected

These land projects only represent a small part of the many connections we are working on. In December 2017, PLAN presented eight Conservation Hero awards to seven landowners and the City of Saratoga Springs, in recognition of their valuable contributions to conserving 1,041 acres of land in the county. These heroes included:

Neil and Cathy Roberts, for conserving 144 acres of their Fiddle-i-Fee Farm in the Town of Northumberland.

Gary and Anne Vanderhorst, for conserving 90 acres on the Cottage Farm, located in Charlton.

Dawn and Dorothy Szurek, for conserving 311 acres of fertile farmland in the Town of Charlton.

David Bowman, for conserving 129 acres on the Malta Ridge Orchard & Gardens in the Town of Malta.

Donald Tooker, for conserving 89 acres of his working farm in the Town of Wilton.

The City of Saratoga Springs, for conserving the 166-acre Pitney Meadows Community Farm located in Saratoga Springs. Mayor Joanne Yepsen and Commissioner Chris Mathiesen accepted the award on behalf of the city.

Don Carpenter, for conserving 89 acres of farm fields and wooded buffer to the Glowegee Creek in the Town of Galway.

Dusty and Arlene Rhodes, for conserving 23 acres of woodlands connecting two other conserved properties in the Town of Galway.

It was wonderful to bring these Heroes together where they could connect with each other and connect to many PLAN supporters.

Each award recipient was presented with a handmade, hand-painted birdhouse, decorated by local artists to reflect aspects of the conserved properties. Birdhouses were built by Bruce Cranston, David and Cole Smith, and Mike Triller, and participating artists included Trish Lyell, Amy Smith, Dana Kear, Takeyce Walter, Kate Edwards, John and Chris Colley, Sue Ginouves, and Loretta Martin.

In her concluding remarks, Maria Trabka said about the Heroes, "They are true stewards of the land who recognize that they are not only charged with the responsibility, but more like blessed with the opportunity, to care for a parcel of land for a

short time while on earth as others who came before and will come after in that land's continuum."

## Making Further Connections

Each one of the projects noted met important criteria identified in PLAN's landscape analysis of Saratoga County. The Landscape of Saratoga County project was designed to help people start thinking about larger-scale landscape-level conservation and to take a bird's eye view of Saratoga County using the data provided to help them understand places they haven't personally experienced.

Building on the Landscape Analysis, and PLAN's near-term priorities emanating from that study, the Board and staff, working with consultant Conservation Impact, developed a Business Plan Blueprint calling for the need to connect important constituencies in the county to our work preserving the quality of life we all enjoy. We are currently working on new and innovative ways to reach out to these untapped supporters in order to engage them in conservation goals.

In order to meet the growing demand for land conservation services, and to connect with more communities

and supporters, PLAN embarked on staff expansion and improvements to our operations. John Kettlewell joined the team as Constituent Engagement Director in early 2017, improving communications and outreach to every corner of the county. Mid-year saw the arrival of two program assistants to manage all of the hard, behind-the-scenes work that keeps a land trust humming. A new Conservation Director was recruited in 2017, and he will begin work in early 2018 on some 13 land projects in the pipeline.

These investments in PLAN's future are already bearing fruit. More frequent and useful communications went out to thousands of followers via email, print, and social media. Events, including Feast of the Fields, were sold out. Hundreds of acres were added to protected lands, and numerous new projects entered the pipeline with funding secured for them.

The structure is in place to connect more people to the land, to connect more people to what we do, to connect more trails, and to connect more land projects to the more than 4,500 acres protected already.

**We couldn't do it without you connecting with us. Let's grow together!**





## GET OUT!

The Palmertown Conservation Area contains a wealth of natural recreational opportunities, and PLAN sponsored a series of events to show people more of what the region has to offer.

A workshop focused on the fundamentals of animal tracking and winter ecology led by expert naturalist, Vince Walsh. A pack of 16 winter wildlife enthusiasts explored the woods and wetlands of Greenfield's Kawning Crow Awareness Center.







## Connecting the trail dots

### A major multi-year effort is underway

to connect the trail dots between Moreau Lake State Park in the north to Saratoga Springs in the south, with many offshoots connecting local communities in Greenfield, Wilton, Corinth, and Moreau.

Volunteers joined PLAN staff in walking-the-walk over old logging roads, overgrown trails, and virgin forest, seeking the best routes through the beautiful Palmertown Ridge area. The goal is both to preserve these valuable lands and to make recreational opportunities

available to local residents and visitors.

On May 1, 2017, at the Moreau Lake State Park Nature Center, graduate students in The State University of New York at Albany 2017 Graduate Planning Studio class delivered their final presentation analyzing conservation and recreation opportunities in the Palmertown Conservation Area before an audience of state park officials, horseback riders, mountain bikers, birders, hikers, volunteers, and conservation and sustainability professionals. The UAlbany class

served as consultants for a “real-life” project, with Saratoga PLAN and the Open Space Institute serving as their “clients.” The students’ analysis provided a starting point for initiatives to involve the local community in developing a strategic and comprehensive conservation plan for the Palmertown Conservation Area.

These plans will depend on the support and advice of local communities. In 2017 PLAN, along with its partners, Open Space Institute and Alta Planning and Design, sponsored a community forum in Greenfield and a community survey seeking input on emerging recreation, conservation, and development opportunities in the Palmertown Conservation Area.

As we connect with the community to develop a strategy for the area based on its natural resources and its potential for economic development, making more and deeper connections with many different interests will be critical.



PLAN partnered with Southern Adirondack Audubon Society (SAAS) to participate in the global Great Backyard Bird Count event. Led by SAAS’s president, John Loz, Saratoga PLAN intern

Abbie Larkin and members of SAAS toured Skidmore’s North Woods listening and looking for birds. Our count of individuals by species will be entered into a global database!



PLAN partnered with Moreau Lake State Park staff to explore Lake Bonita, a recent addition to the park.



## Thank a volunteer!

With 10 public preserves and more than 22 miles of trails to maintain, Saratoga PLAN depends on the work of many dedicated volunteers. You may have met some of these tireless workers clearing downed trees, building kiosks, marking trails, working on bridges, or patrolling to make sure your hike is safe, fun, and rewarding.

Ralph Keating exemplifies the amazing contributions made every week. This past summer he headed out to the Galway Nature Preserve to do some work, and then submitted this report. It is a great example of what volunteers do, often out of sight and out of mind. The next time you enjoy a hike on a PLAN property, please thank a volunteer!



Ralph Keating,  
Cliff Sampson,  
and Mary Alice  
Nyhan

*"I got back to Galway Preserve today to do some of the building repair jobs that we discussed and also did trail work. First I went to Lowes at 8 am to get new windows, glazing and quickrete concrete mix.*

*Then starting at the preserve at 9, I did the following:*

*Removed old broken glass and replaced with the plexiglass panels, caulked with the window glazing; made a form for the hole in concrete wall and put in three layers of quickrete to build up the concrete to existing outer wall surface (I did this over the course of the day to let each layer dry); build up the inside of the hole in the roof with wood and then sheathing, then placed two layers of aluminum roofing material on the new sheathing under the existing roof material, then caulked all seams; cut the grass around the preserve and building; walked the trails and placed about 30 markers where they were missing or inadequate (as I walked I noticed 4 good sized trees down on the preserve trails; went back on the trails with chainsaw and removed all the trees from the trails); painted the trim around the preserve building with white semigloss exterior paint. I left the preserve at 5:15 and got home about 5:45. Long day — about 9.5 volunteer hours. I plan to get there again in 2 weeks to cut the grass before I go away for a vacation." —Ralph*



## Connect with the land: on stewardship work

**“In perpetuity” sounds pretty daunting**, but not to Stewardship Coordinator Greg Redling. To protect Saratoga PLAN’s 27 fee lands and 33 conservation easements in perpetuity requires a lot of planning, organization, and field work, but Greg is up to the task.

A “baseline” report is created when the property is first preserved. The baseline document describes the condition of the property in detail, and includes maps, photographs, and other documentation. Other files contain Property Condition Reports (PCRs) and Monitoring Reports, describing the state of the property during previous stewardship visits, which are conducted once a year a minimum. These documents and many others are retained and stored carefully, with copies in multiple locations.

Monitoring properties on a regular basis for any changes or for any potential violations of the conservation easement is an important part of what a land trust does. To prepare for a day in the field on a conserved property it is first necessary to review the details of the conservation easement, with its written

description of what the purpose of the easement is. In some cases the main purpose is to preserve the agricultural value of the land, while in other cases it might be mainly for recreational use.

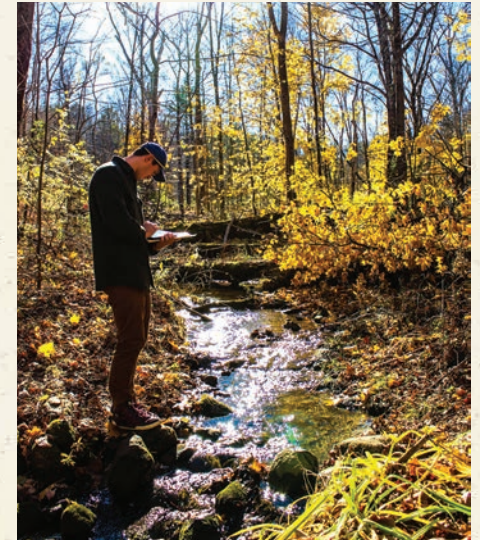
Once Greg has done his advance work, a call to the landowner is made to make sure the visit will come at a good time. Plans are made for a weather window that will allow Greg to visit the property safely, but despite the best laid plans he often ends up hiking in the rain, braving snowy winds, or wading across a bog. One day he might be packing up and heading out to walk the boundaries of a protected farm, or to patrol a recreational trail.

Greg says, “It’s easy to romanticize walking around on beautiful properties, but the reality is not quite that nice.” He adds, **“I’ve ripped my jacket and pants and gone waste deep in bogs.”**

A GPS unit records Greg’s travels across the land, and the GPS tracks are used to create maps that are stored permanently with the land records.

All of this takes a lot of time. A smaller property, under 100 acres, might be monitored in a few hours, while larger properties might require a day or more. The field work is then followed by the creation of detailed reports and maps. As an accredited land trust, PLAN is required to monitor every property on a regular basis and to store the records in perpetuity.

Greg says the key is to, **“Take it step-by-step.”**







## PLAN STAFF RECONNECT WITH THE LAND

On a chilly day in January 2017, Saratoga PLAN staff were able to reconnect with the land on a visit to Tim Biello's Featherbed Lane Farm in the Town of Charlton. Tim works his land with the aid of draft horses and traditional farming techniques, and then sells the bounty to Community Supported Agriculture (CSA) subscribers, who in turn get great pleasure from supporting local, farm-fresh food.

Saratoga PLAN is in the process of conserving the Featherbed Lane Farm and expects to close on a conservation easement funded by NYSDAM, Saratoga County, Equity Trust, RSF Foundation, and Local Farms Fund in 2018.

## Connect with us

**In 2017 several new people made the connection with Saratoga PLAN, and now you can connect with them.**

John Kettlewell started in January as Constituent Engagement Director, and all of you have connected with him through e-blasts, Facebook and Twitter updates, events like Feast of the Fields, or maybe with a visit to the office.



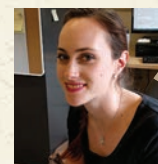
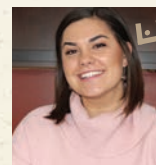
In June **Michelle Hall** grabbed the reins of Program Assistant for Development, and immediately made a big impact with her work on the sold-out Feast of the Fields.



Also in June, **Dana Kear** came aboard as Program Assistant for Operations, where she works to keep all those little things working right that allow everyone to get their jobs done.

In early 2018 a new Conservation Director will join PLAN's staff in order to connect us to more land protection projects.

As always, PLAN was ably assisted by a great group of interns. Abigail Larkin led many public education events in the Palmertown Conservation area and finalized the update to the county-wide trails dataset. Allison Hargrave worked on conservation projects. Both Abigail and Allison have moved on to professional positions in the conservation and planning spheres.



Summer interns **Laura Kipper**, Stewardship, and **Rachel Renders**, Communications, worked tirelessly on important projects. Laura continues to work part time on GIS and mapping projects. Rachel was a key person in Feast planning.

Several new board members have added valuable connections to PLAN's outreach. Seth Dunn joined the board early in the year followed by James Towne. Later Lorraine Skibo, Karen Totino, and Billie Taft-Sitler came onboard. PLAN thanks John Barone, Tim Jaques, and Chip Ellms for their service on the board, and we know they will continue to maintain their connections with our land protection efforts.

## CONNECTING FARMS TO YOU

Months of planning go into the carefully orchestrated preparations for Feast of the Fields. In order to make it happen we connect farmers with local chefs, volunteers with farmers and vendors, site staff and chefs with PLAN staff and volunteers. We then put it all together in September to connect hundreds of supporters with delicious farm-fresh food.

A record number of Saratoga PLAN supporters turned out for the 12th Annual Feast of the Fields, held September 21st at Saratoga National Golf Club. Dishes included everything from Fried Maple Bacon Duck Rillettes, to Red Wine Braised Short Ribs, to Butternut Squash and Sweet Onion Lasagna. Desserts included Apple Cheesecake Mousse Parfait and Spiced Maple Pecan Cupcakes with Vanilla Butter Cream. Needless to say, nobody went home hungry.

The delicious local food was washed down with area beverages ranging from Bowman Orchards Apple Cider and Hard Cider from Saratoga Apple, to beers from Artisanal Brew Works and Common Roots Brewing Company, to some of the harder stuff from Saratoga Courage Distillery and Upstate Distilling. There were wines from Fossil Stone and Victory View Vineyards. Silent auction items filled the big tent, where guests also watched artist Elisa Sheehan at work. Guests bid on donated items like a leather flight jacket, wine baskets, artwork, and experiences such as tour tickets on the Hoppy Trails Brew Bus. And, everyone was entertained by the sounds of Hot Club of Saratoga.

**The 13th annual Feast will be September 20, 2018. Come and connect with us!**





Greg Redling and  
Maria Trabka

## Saratoga PLAN connects with partners to make it happen

### OPEN SPACE INSTITUTE

OSI has helped to expand the available trail routes in the Palmertown Conservation Area by purchasing the Greentree Lake area, and PLAN explored and mapped possible trail routes during 2017. OSI is partnering with PLAN on community engagement activities and several land conservation projects in the region.

### THE GREENBELT TRAIL

Saratoga PLAN has been connecting with local, like-minded organizations and community leaders to promote the creation of a multi-use trail that will circle the City of Saratoga Springs, and include connector spurs into town. PLAN is currently working with landowners on a key connection between the Bog Meadow Trail and Union Avenue.

### CONSERVATION CONVERSATIONS

Saratoga PLAN connected with the Town of Malta and invited the public to a free public "Conservation Conversation" in the Malta Community

Center. More than 25 local landowners and concerned citizens attended the educational event lead by Maria Trabka, of Saratoga PLAN, Jaime O'Neill, Planner for Saratoga County, David Haight, Chair of the Town of Malta Farmland and Open Space Committee, Audrey Ball, Director of Parks, Recreation and Human Services for the Town of Malta, and Tony Tozi, Building and Planning Coordinator for the Town of Malta.

Topics discussed included currently conserved lands in Malta, five different options for conserving farms and other properties, town regulations, and the pluses and minuses of different approaches to protecting natural spaces.

### HISTORIC HUDSON— HOOSIC RIVERS PARTNERSHIP

Saratoga PLAN worked with many other organizations and local communities in support of the creation of a new Champlain Canal Region Gateway Visitor Center, which was kicked off in 2017 with a timber raising ceremony. The new center will connect travelers to the historically significant and culturally unique region of the Saratoga and Bennington battlefields and the Champlain Canal.

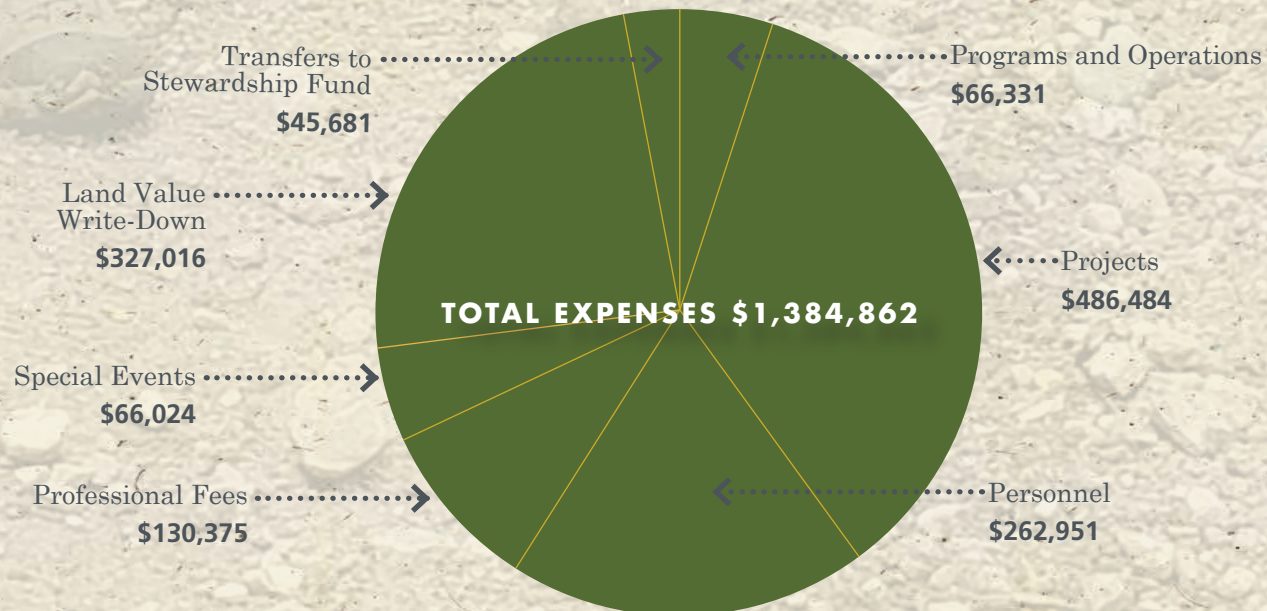
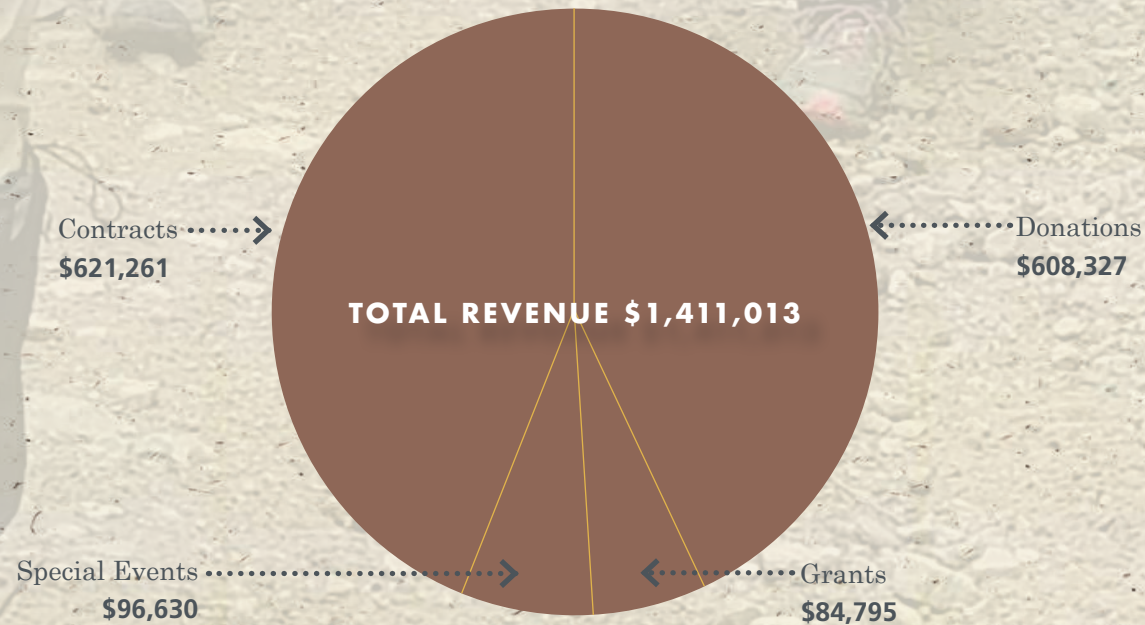




# 2017 Financial Report

## Notes

Saratoga PLAN's audited financial statement for fiscal year 2017 should be completed by mid-summer 2018. Until then, we anticipate that the basic financial picture for the organization (minus investment data) is accurately reflected in these charts. Some of the revenue received in 2017 is restricted for project expenses in 2018. Saratoga PLAN is a not-for-profit 501(c)3 organization, a registered NYS charity, and a nationally accredited land trust, meeting the highest standards for nonprofit management, land conservation transactions, and land stewardship. Complete audited financial statements are available from the NYS Department of Law, Charities Bureau, 120 Broadway, New York, NY 10271.





# Thank You!

Without your support we couldn't make the connections that Preserve Land and Nature for all of us. And, the most important connection is with you, the backbone of Saratoga PLAN.

## LEGACY CIRCLE

(planned bequests)

Tim Barnett  
Ray David  
Barbara Faraone  
Barbara L. Glaser  
Barbara Hennig  
Richard Higgins  
Field Horne  
Merry Huber  
Barbara Jefts  
Gina Johnson  
Robin Kaska  
Lorna Kircher  
Carolyn Malstrom  
Chuck Martin  
Susan Miller  
Maryanna Milton  
Phyllis Miuski  
Edith Pilcher  
Libby Smith-Holmes  
Martha Strohl  
Shane and Jamie  
Williams-Ness  
Larry and Meg Woolbright

## FOUNDATIONS

Bernice B. Godine Family  
Foundation  
Community Foundation of the  
Greater Capital Region  
Christopher Dailey Foundation

Dockstader Charitable Trust  
GE Foundation  
Hamill Family Foundation  
Jane N. Mooty Foundation  
Land Trust Alliance  
New York State Conservation  
Partnership Program  
Newkirk Foundation  
Nordlys Foundation  
PCLB Foundation, Inc.  
River Farm America  
Foundation  
United Way/SEFA  
Walter S. Borisenok Family  
Foundation

## GOVERNMENT SUPPORT

New York State Conservation  
Partnership Program  
New York State Department of  
Agriculture and Markets  
Saratoga County  
Town of Galway  
Town of Northumberland

## LAND AND CONSERVATION EASEMENT DONATIONS

Don Carpenter

Harold and Arlene Rhodes  
Neil and Catherine Roberts

## STEWARDS (\$25,000+)

Dockstader Charitable Trust  
Barbara L. Glaser and  
Paul Zachos  
Land Trust Alliance  
New York State Conservation  
Partnership Program  
Newkirk Foundation  
PCLB Foundation, Inc.

## CONSERVATION- ISTS (\$10,000+)

Conservation Impact  
GE Foundation  
James Gold  
Richard Higgins  
Jane N. Mooty Foundation  
Trust  
Lorna Kircher  
Nordlys Foundation  
Julia and Robert Stokes

## BARNRAISERS (\$5000+)

Capital Region Living  
Magazine  
Charlie and Brigid Dake  
Stuart Mercer  
John and Rosemary Munter  
Brad Oswald  
Prime at Saratoga National  
Martha Strohl and Thomas  
O'Connor  
Ed Swyer  
The Adirondack Trust Company  
James and Sue Towne

## HARVESTERS (\$2500+)

Phyllis Aldrich  
Alysa and Jay Arnold  
Aztech Technologies, Inc.  
Brooks Group of Merrill Lynch  
Cannon Heyman & Weiss, LLP

Community Foundation of the  
Greater Capital Region,  
Linda G. Toohey Donor  
Advised Fund  
Fil Fina III  
Peggy and Rich Greenawalt  
Hamill Family Foundation  
Bill and Joanna Lasher  
Will and Tabitha Orthwein  
Mark and Elizabeth Sacco  
James and Robin Sevinsky  
Linda and Michael Toohey  
Larry and Meg Woolbright

## CULTIVATORS

(\$1000+)  
Patricia Bokan  
Buckley Gent MacDonald  
& Cary, PC  
Christopher Dailey Foundation  
Colley Asset Management, Inc.  
D. A. Collins Construction  
Co., Inc.  
Jenn Hunt Dempsey and  
Stephen Dempsey  
George and Tamie Ehinger  
Chip and Sally Ellms  
Free Form Fibers  
Gibson Brothers  
GlobalFoundries  
Joseph and Mary Grasso  
Greenfield Manufacturing Inc.  
Sally Hart  
Barbara Hennig  
King Wealth Management  
Group, LLC  
Jeannine Laverty  
Kathleen and John Mannix  
Chuck Martin  
Stephen and Jane Mastaitis  
Ed Miller  
Nicholas Miller  
New Country Motor Car Group  
Inc.

Ryan Osinski  
River Farm America  
Foundation  
Thomas and Diana Ryan  
Clifford Samson

Saratoga National Bank &  
Trust Company  
Saratoga Regional YMCA  
Saratoga TODAY  
Lorraine Skibo and  
Dan Chernoff  
SKS Bottle & Packaging, Inc.  
Penny Steffen  
Stewart's Shops  
Christine Swann  
Robert Vessels  
Catherine Walbridge-Allen  
and Bob Allen  
Walter S. Borisenok Family  
Foundation  
Shane and James  
Williams-Ness

## TRAILBLAZERS

(\$500+)  
Janet and Jeff Altamari  
Tim and Claire Barnett  
Bella Home Builders, Inc.  
Bernice B. Godine Family  
Foundation  
Katja Bock  
Jennifer Brady-Connor and  
Michael Connor  
Tracy Buyce  
Geoff and Lisa Cannon  
Clements Insurance Brokers,  
Inc.  
Marie Costa  
Courtyard by Marriott  
Saratoga Springs  
Helen and Bill Crawshaw  
Bill and Susan Dake  
Thomas and Diane Denny  
Kate and Frank Edwards  
Elan Planning & Design, Inc.  
Bruce Fina  
Karen Flewelling  
Amy Godine  
Peter Goutos and Cheryl Smith  
Jaclyn Hakes  
Jean and Robert Hayes  
Jeremy Jones and Tracy Savage  
Edgar and Carolyn King  
Margaret and Hank Kinosian

Koval Bros. Dairy, LLC  
Miller Printing & Litho, Inc.  
Thomas Nelson and  
Ann Henderson  
Nancy O'Malley  
Marne Onderdonk  
Gordon Peters  
Katie and Mark Petronis  
Howard and Susan Read  
Ellen and Hal Redling  
Charles and Katharine  
Richman  
James and Gretchen Ruhl  
Patrick Ryall  
Saratoga Builders Association  
Patricia Saunders and  
Richard Miller  
Raymond and Linda Seymour  
Elisa Sheehan  
Kathleen Shohfi  
Thomas Siragusa  
St. Andrews Society  
Beau Stallard  
Connie and Martin Stone  
Stone Industries  
The LA Group  
Tooher & Barone, LLP  
Maria and David Trabka  
Tracey Buyce Photography  
Eugene and Nancy Vermilyea  
Sue and Stephen Verral  
Doug and Cory Ward  
Welcome Stock Farm  
Sue Ziegler

## SUPPORTERS (\$250+)

Michael and Stacey Allen  
Alpine Sport Shop  
Frederick and Sheelagh Bailly  
Alison Barnes  
Charles Beers  
Joyce Hunt Bouyea  
Boyce & Drake Co., Inc.  
Dianne Bresee  
Samuel Brown  
Byrne Orthodontics  
Ralph and Nancy Caparulo  
Capital Genealogy  
Capital Tractor, Inc.

David Clark and Mary C. Lynn  
Melissa Clement  
John and Chrissy Colley  
Complexions Spa for Beauty &  
Wellness  
Nancy Conant  
Bob and Barbara Conner  
Jean-Marie Crocker  
Cudney's Launderers & Dry  
Cleaners  
Dalton Law Firm, LLC  
Seth Dunn and Victoria  
Fast Dunn  
Eildon Tweed Farm  
ESMI of New York  
Barbara Faraone  
Ella and Dennis Felcher  
Erica and Scott Fuller  
Gatherings Wildcrafted  
Botanicals  
Gilbert VanGuilder Land  
Surveyor, PLLC  
Lillian Grandjean  
Green Conscience Home &  
Garden  
Steve Groseclose and  
Jael Polnac  
Barbara and Charles Hanehan  
Tim Holmes and Libby  
Smith-Holmes  
Merry Huber  
Kevin Jablonski and  
Karen Christensen  
James and Sons Tobacconists  
Daniel and Patricia Klaus  
Loretta and Kenneth Klein  
Norman and Christine Kuchar  
Gail Kyler  
Mark Lawson and Annette  
Decresce-Lawson  
Brian and Jean McMahon  
Mountain Man Outdoor  
Supply Company  
Hilary Moynihan-Loyola and  
Peter Loyola  
Michael Murray  
Lisa Nagle and Bruce Cranston  
Karl and Suzanne Newton  
Mary Alice and Michael Nyhan  
Oberlander Group



Erin O'Grady-Parent  
Peg Olsen  
Patrick Oreson  
Elizabeth and Karl Parker  
Perrone Leather Apparel  
Julia Popova  
Marion Preston  
AC and John Riley  
Rock Hill Bakehouse  
Glenn and Deborah Rockwood  
David and Lauren Roecker  
Tom and Kristie Roohan  
Paul Salerni  
Slack Chemical Company  
Beth and Mark Smisloff  
Sneeringer Monahan Provost  
Redgrave Title Agency  
Bruce Sparano  
Henry Stebbins and  
Val Washington  
Michael and Linda Toohey  
Karen Totino  
Mary Beth Walsh  
Caroline and Richard Walter  
Marissa Wendolovske  
White Dog Preserve  
Lori Willard  
Ethan and Anne Winter

#### **FRIENDS** (\$100+)

Arlene and David Adams  
Adirondack Soaring  
Association, Inc.  
Kyle Alsop  
Jeff and Heath Ames  
Michele Anderson  
Judy and Grady Aronstamm  
Mark Baker  
Duane and Cynthia Ball  
Ballston Spa National Bank  
Barber Brothers Dairy Farm,  
LLC  
Lisa Bates  
Jacqueline Bave and  
Daniel Dolan  
Cynthia and John Behan  
Meg Benke and John Ray  
Raymond Bertrand  
Joyce Bixby

Ray Black  
Susan Bokan  
Aubrey Boles  
Natalie and Ken Bollerud  
David Bonhoff  
Jim and Jan Bornheim  
Mary Bowen and Donald  
Lipkin  
Monica and Mike Bracken  
Virginia Brandreth  
Janet Britt and John Dojka  
Christopher and Kate Brown  
Christina and John  
Brueggemann  
Thessaly Bullard  
Zoe Burghard  
Stephen Burkly  
Stephen Butler  
Valerie Butler  
C.B. Enterprises  
Caffé Lena  
Lisa and John Canfield  
Capital Region Living  
Magazine  
Margaret Catellier  
Mike and Rose Cavalluzzo  
John and Adrienne Cetner  
Carrie Chalmers and  
Chris Morrow  
Holly Cheever  
Laura and Gary Childs  
Jon Church  
CLA Site Landscape  
Architecture, Engineering,  
and Planning PC  
Hilary Claggett and  
Richard Little  
Pat Close  
Dan Clothier  
John and Elizabeth Collins  
John and Mary Lou Collyer  
Donna and Donald Colosimo  
Cynthia Corbett  
JoAnn Cote-Round  
Ben Cottrell  
Bradley Coyer  
Connie Curtis  
Robert Cutler  
Richard and Doris Daigle  
Gary Dake

Robert and Suzanne Daly  
Denise D'Angelico  
Allen David  
Dude Dehn  
Justine and Brian Denison  
Ellen Depan  
James and Deborah  
DePasquale  
Britt and Erik Dittrich  
Jacqueline Donnelly  
Peter Dowling  
Drabek Homes  
Jean Dugan and Ben Ford  
Theresa Ellsworth  
Wallace Elton  
Engineering America Co.  
Nancy Fairbanks  
Kimberly Fanniff  
Farm Credit East  
Alison Farrell  
Pamela and Dick Farrell  
Richard Fenton and Hollyday  
Hammond  
Eleanor and Edward Fernau  
Rocco and Laurie Ferraro  
Fil and Joan Fina II  
Fish Creek Rod & Gun Club  
Bruce and Cathy Fleming  
Rita and Dan Forbush  
Robert Frawley and  
Marilyn McCabe  
Nancy Fritch  
Mary Gage-Los and  
Michael Los  
Lily Gallagher  
Kathryn Gallien and  
Kenneth Hapeman  
Keith and Kathleen Giles  
Glenville Hills Garden Club  
of Saratoga County  
Gerard Glowniak  
Pat and Bruce Goodale  
Allen Goodman  
Christine Goodness  
William Gorgos  
Jeffrey and Margaret Gorss  
James Gould  
James and Joanne Grande  
Chris and Shirley Greagan  
Amy Green

Lee Greenstein  
David Greenwood  
Cheryl and Ken Grey  
Harold Hagemann and  
Susan Knapp  
Judith Halstead  
Jane Harrington  
Megan Harris-Pero and  
Joel Pero  
Emily and Howard Hart  
Lindsay Harvey  
Patricia HasBrouck  
Donna and Doug Hatch  
Mark and Elisa Haworth  
Francoise Herve  
Sandra Heuning  
Sara Hewitt  
Jennifer and David Hoffman  
Katharine Hooper and Arthur  
Porter  
Olivia Huffman  
Cornelia Hume  
John Jacobs  
Jeri and Jerry Jannicelli  
Christopher Jennings  
Susan Johnson  
Bret and Kristin Jorgensen  
Joseph P. Mangione, Inc.  
Lisa Kalvaitis  
Karen and Robert Kear  
Tucker and Dana Kear  
Ralph Keating  
Bahram Keramati and  
Ruth Andrea Levinson  
Ian Kettlewell  
James Kettlewell  
John and Leslie Kettlewell  
Richard King  
Pam and Roger King-Hall  
Rich Kinney and Joan McGee  
Thomas and Joanne Klepetar  
Knight Orchard of Saratoga  
Co. Inc.  
Barbara Kosciolk  
Jennifer and Christopher Koval  
Mieka LeClair-Lundy  
Margaret Lecuyer  
Jeffrey Leon  
Shirley and Roy Lerman  
Joseph Levy

Glenda Lewis  
Chris Lincoln and Tammara  
Van Ryn-Lincoln  
Thomas and Erin Lindsay  
Jean and Richard Loewenstein  
Ed and Judith Lowe  
Patricia Lyell and Robert  
Gilston  
Jason MacGregor  
Daniel Maggs  
Carey Mann  
Maplebrook Farm  
Julie Marlette  
Peter Martin and Christine  
Alexander  
Elliott and Cathy Masie  
Kathleen McGowan  
Karen McKenney  
Ron and Jackie Medaglia  
Douglas Meyer and Lee  
McGoldrick  
Susan Miller  
Mary Miner  
John Mitchell  
Mandy Mittler  
Bradley Mohr  
James Mulligan  
Sheila Murphy  
Lee and Eva Nagel  
Raymond and Mary O'Connor  
Henrietta O'Grady  
Olde Saratoga Brewing  
Company  
Jeff and Margo Olson  
Kathryn Oppedisano  
Ron Parker  
Jean and Ralph Pascucci  
Brian and Emily Patterson  
Gordon Peters  
David Pierce  
Hope Plavin  
Kim Poli and Theodore Laddis  
Posie Peddler, Inc.  
Kevin Purstell  
Lester Ramsdill, III  
Rosemary Ratcliff and  
Buckmaster de Wolf  
Jack and Lenore Reber  
Reform Pilates  
Kelly Reiners

Judy Rightmyer  
Rise Yoga and Movement  
Center  
Sandra Rohner  
Michele Rose  
Ardie and Dan Russell  
Paul Safran  
Helmut and Erika Samide  
Erin Santspre  
Saratoga Back Country  
Horsemen  
Saratoga County Chamber of  
Commerce  
Saratoga Downtowner  
Saratoga Performing Arts  
Center  
Saratoga Zymurgist  
St. Croix Farm  
Dee and AJ Sarno  
Paul and Nancy Sausville  
Michael Scammacca  
Karen and Bernhard Scholz  
Kurt Schumann  
Caroline Seligman and  
George Jolly  
Martin Shields  
Harold Shippey  
John Smith  
George Solotruck  
Joyce Soltis  
Cynthia Spence  
Anita Stabrowski  
Eileen Stone  
Toni Sturm  
Elizabeth C. and  
William Sutton  
Elaine Sweenor  
Rita Sweenor  
Janet Talley  
Target Sports  
Kathy Taylor and  
Don Pompliano  
The Barrelhouse Saratoga  
The Wild Center  
Thomas and Sharon Theriault  
Francoise Thomas and  
Peter Settle  
Shirley Thomas  
Audrey Thompson  
Denise Thomsen

Paul Tonko  
Dave and Sara Torrey  
Lucy and Whitney Tower  
Genevieve Trigg  
Patricia Tuz  
United Way / SEFA  
Steven Valentine  
Anne Van Acker  
Margie Van Meter  
William Varcasio  
Matthew and Stephanie Veitch  
Karen Waldrip  
Rachel Ward and  
Simon Pedrotty  
Donald Washburn  
Florence and Wayne Wheeler  
Douglas Wildes and  
Julia Nalwalk  
Chris and Emily Willcox  
William C. Schmidt  
General Contractor  
John Witt  
Dan and Carol Wojcik  
Joachim Wolfram  
Dennis Woodmansee  
Tamara Woolsey Davis  
Wayne Wright  
Joanne Yepsen  
Libby Yunger  
Janice Zurbrugg  
Sandra and Will Zwick

#### **OTHERS**

Adirondack Mountain Club,  
Glens Falls-Saratoga Chapter  
Virginia Adler  
Arnold and Elaine Alfert  
Louis Alfieri and Kym Hance  
Amazon Smile  
Anderson Acres  
Florence Andresen  
Nicholas and Julia Annotto  
Wayne and Janice Arnold  
Sarah Ashton  
Debra Balliet  
Alan Belenz  
Bella & Lindy Pet Boutique  
Frank and Nancy Berlin  
Eliot and Renee Birnbaum



Jamie Brown  
Susan Burton  
John Caffrey  
James Caiello and  
Marcia Goldfeder  
Milda Carroll  
Carolyn Carros  
Catherine Casella  
Thomas and Alene Cobb  
Belinda Colon and  
Benj Gleeksman  
Combined Federal Campaign  
Catherine Commerford  
Frank Conte  
Kathleen Corbett  
Crafter's Gallery  
Richard Daleo  
Ellen deLalla  
Denison Farm  
Ruth Dibelius  
Mary Anne Doyle  
Melanie and Russell Doyle  
Eastern Mountain Sports  
Elihu Farm  
David Erickson  
Exit 15N Firewood  
Jennifer Ferriss  
Carolyn Finnegan  
Bernard Forman  
Melinda Fuller  
Lynne Gelber  
Tom Gibbs  
Patrick Gioia  
Elizabeth Gordon and  
Thomas Christenfeld  
Thomas and Adele Grasso  
Margaret Greenbaum  
Gloria Grenwald  
Paul and Virginia Griffen  
Bruce Grundy  
Robert and Margaret Hall  
Gail Higgins  
Bruce Hiscock and  
Helen Dickerson  
Mark and Linda Hofmann  
Home Made Theater  
Margie Ingram and  
Joel Goodman  
Leonard Kerr  
Lynn Lacross

Paul and Mary Laskey  
Joel and Maxine Lautenberg  
Peter and Kathleen Lee  
Samantha Levy  
Lindsey's Country Store &  
Sweet Shop  
Su Luke  
Margaret Lynch  
Mary MacDonald  
Eileen Mack  
Charles Malmborg  
Beverly Mastrianni  
Lurana McCarron  
Karen Ann McEvoy  
Matthew Miczek  
Mark and Alice Miller  
Mary Ann Miller  
Milton Manor Pet Spa  
& Resort  
Linda Motzkin and Jonathan  
Rubenstein  
Deborah Mull  
Michael Naughton  
Cynthia O'Connor  
Michael O'Rourke  
Ronald Owen  
John and Patricia Paduano  
Robert Panasci  
Helen Patti  
Kyle and Ellen Pemrick  
Helen Porter  
Jean Quattrocchi  
Leeanne and Gary Raga  
Erv and Linda Rhode  
Devin Rigolino  
Shelley and Stephen Riley  
Vincent and Maria Rinella  
Kenneth Robbins  
Jay Rogoff and Penny Jolly  
Anne and Peter Rokeach  
Karen Royston  
Patricia Rubio and  
Juan Lertora  
Gene and Ellen Salerni  
Saratoga Paint and Sip  
Saratoga Polo Association  
Saratoga Strike Zone  
Saratoga Winery  
Virginia Sawicki  
Christopher Scannell

John and Eileen Schneider  
Ruth and Tom Schottman  
Patricia Schwankert  
Jean Seiler  
Frank Shipp  
Lynn Sickles  
Ida Smith  
Neal and Robin Solomon  
David Spingarn  
Judy Stacey  
Malina Stawarz  
Mark and Elizabeth Straus  
Janine Stuchin  
Barbara Sutherland  
The Broke Filly Boutique  
Barbara Thomas  
David and Annie Townsend  
Zealie and Susan Van Raalte  
Harry and Noreen Wade  
Nancy Weber  
Laura Welles  
Karen Weltman and  
Jon Sterngass  
Whistling Kettle  
Robert and Joyce Wickizer  
Dolores Wilson  
Mary Withington and  
Susan Wendelgass  
Judy Wohltman  
Thersa Yorker  
Mary Lou Young  
Martina Zobel

#### IN HONOR OF

**Jay Arnold**  
Linda and Michael Toohey

**Brigid and Charlie Dake**  
Bill and Susan Dake

**Arlene and Dusty Rhodes**  
Nancy and Ralph Caparulo

**Lucas Somerwil**  
Lisa Drabek, Drabek Homes

**Julie and Bob Stokes**  
Linda and Michael Toohey

#### IN MEMORY OF

**Linda Carpenter**  
Glenville Hills Garden Club  
of Saratoga County

**Robert Hennig**  
Ruth Dibelius  
Carolyn Finnegan  
Margaret Greenbaum  
Gloria Grenwald  
Gail Higgins  
Barbara Kosciolk  
Erv and Linda Rhode  
Penny Steffen  
Shirley Thomas  
Judy Wohltman  
Thersa Yorker  
Mary Lou Young  
Libby Yunger

**Richard P. Mills**  
Erin O'Grady

**Barbara Oswald**  
Edward Fernau

**Zim Smith**  
Libby Smith-Holmes

**Spencer**  
Dianne Bresee

#### IN-KIND

9 Miles East Farm  
Adirondack Sign  
Adirondack Soaring  
Association, Inc.  
Michael and Stacey Allen  
Linda and Michael Toohey  
Anderson Acres  
Anna Mae's Homemade Jams  
Argyle Cheese Farmer  
Artisanal Brew Works  
Bella & Lindy Pet Boutique  
Shelli Bischoff  
BOCES Culinary Arts  
Matthew Bolton  
Bowman Orchards  
Vivian Brammer  
Buckley Gent MacDonald  
& Cary, PC  
Tracy Buyce  
Caffé Lena

Capital Genealogy  
Capital Region Living  
Magazine  
Cliff's Vegetables  
Cobram Estate of Boundary  
Bend  
Common Roots Brewing  
Company  
Conservation Impact  
Crafter's Gallery  
Daniel Chessare  
Courtyard Marriott Saratoga  
Dancing Ewe Farm  
Denison Farm  
Eastern Mountain Sports  
Linda Eastman  
Kate and Frank Edwards  
Elihu Farm  
Exit 15N Firewood  
Farmer T's Greenfield's Forever  
Farmers Hardware  
Kendra Farstad  
Featherbed Lane Farm  
Bruce Fina  
Fossil Stone Vineyards  
Gatherings Wildcrafted  
Botanicals  
Green Conscience Home &  
Garden  
Thomas Gulbrandsen  
Hand Melon Farm  
Hanehan Family Dairy  
Hanehan Family Farmstand  
Sally Hart  
Michael Hinrichs  
Home Made Theater  
Hoppy Trails Brew Bus  
James and Sons Tobacconists  
Nicholas Karoly  
Kettlewell & Edwards  
King Brothers Dairy  
Knight Orchards  
Lake George Steamboat  
Company  
Leah's Cakery  
Lindsey's Country Store &  
Sweet Shop  
Lucky Bee Apiary  
Mack Brin Farms  
Maple Valley Farm

Maplebrook Farm  
Mariaville Mushroom Men  
Chuck Martin  
Stuart Mercer  
Merry Monk  
Miller Printing & Litho, Inc.  
Milton Manor Pet Spa &  
Resort  
Mountain Man Outdoor  
Supply Company  
Paul Moyer  
Megan Mumford  
John and Rosemary Munter  
Native Farm Flowers  
Nettle Meadow Farm  
Oberlander Group  
Old World Farm  
Olde Saratoga Brewing  
Company  
Otrembiak Brothers Farm  
Perrone Leather Apparel  
Pleasant Valley Farm  
Marc Plessis  
Posie Peddler, Inc.  
Prime at Saratoga National,  
Inc.  
Braden Reardon  
Reform Pilates  
R&G Cheese Makers  
Rise Yoga & Movement Arts  
Center  
Rock Hill Bakehouse  
Roma Foods Importing  
Company  
R.S. Taylor & Sons Brewery  
Mark and Elizabeth Sacco  
Gordon Sacks  
St. Croix Farm  
Salt & Char  
Julia Sanzen  
Saratoga Apple  
Saratoga Courage Distillery  
Saratoga Juice Bar  
Saratoga National Golf Course  
Saratoga Paint and Sip  
Saratoga Performing Arts  
Center  
Saratoga Polo Association  
Saratoga Regional YMCA  
Saratoga Strike Zone

Saratoga TODAY  
Saratoga Winery  
Saratoga Zymurgist  
Chris Scannell  
Elisa Sheehan  
Shushan Valley Hydro Farm  
Leah Stein  
Stone Industries  
SUNY Adirondack Culinary  
Arts Center  
Target Sports  
The Barrelhouse Saratoga  
The Blue Hen  
The Broke Filly Boutique  
The Wild Center  
Thomas Poultry Farm  
Tracey Buyce Photography  
Upstate Distilling Co.  
Victory View Vineyard  
West Wind Acres  
Whalen's Horseradish  
Whistling Kettle  
White Dog Preserve  
Wm. H. Buckley Farm  
Willow Marsh Farm  
Winney's Blueberry Farm  
Sue Ziegler

**We truly appreciate each  
and every one of you and  
wish to acknowledge the  
individuals, foundations,  
business partners, partner  
organizations and volun-  
teers who make it all possi-  
ble. Inevitably, some names  
are missed or misspelled.  
We sincerely apologize.  
Please let us know!**

PHOTOGRAPHY  
Frank Berlin  
Sue Clark  
Emma Hitch  
Dana Kear  
Ashley Keatley  
John J. Kettlewell  
Laura Kipper  
Abigail Larkin  
Greg Redling





Follow us on Twitter @SaratogaPLAN



Like us on Facebook @Saratogaplan



Subscribe to our e-news on our website



Follow saratogaplan on Instagram



saratoga  
PLAN

Preserving Land and Nature

112 Spring St., Room 202  
Saratoga Springs, NY 12866  
518-587-5554 phone  
518-587-4054 fax  
[www.saratogaplan.org](http://www.saratogaplan.org)

