



SARATOGA
P.L.A.N.
PRESERVING LAND AND NATURE

news from the field

FALL 2013

Saratoga PLAN 112 Spring Street, Suite 202, Saratoga Springs, New York 12866
(518) 587-5554 • www.saratogaplan.org

spring run fun



On Saturday, July 13th, Saratoga PLAN teamed up with students from Skidmore's Pre-college Program for a day cleaning up the Spring Run Trail. After a long day of hard work coordinated by PLAN Volunteer Peter Goutos, an entire truck load of debris that had been dumped decades earlier was finally cleared. A big thank you to all the volunteers who helped make the day a success!



*PLAN Board of Directors & Staff
enjoying the Spring Run Trail.*

native plant landscaping

On Thursday, August 29th, eleven volunteers from the Skidmore Student Conservation Corps. didn't mind getting messy, as they helped tend to PLAN's newly planted native plant landscape at the Rowland Hollow Creek Preserve.



fun at farm aid 2013



We were pleased to have had so many people stop by Saratoga PLAN's booth at Farm Aid to draw their favorite farm, farmer, animal, crop, barn, or tractor.



feast of the fields by the numbers

552 Guests, 119 Honorary Committee members, 99 Ingredients, 49 Farms, 46 Auction Donors, 28 Sponsors, 26 Volunteers the night of the event, 17 Planning Committee members, 10 Chefs, 9 Culinary Students, 7 Vendors, 5 Carpenters, 4 Birdhouse Artists, 4 Conservation Heroes Honored, 1 Harvest Moon, and over \$50,000 raised for farms, woods, waters and trails in Saratoga County.

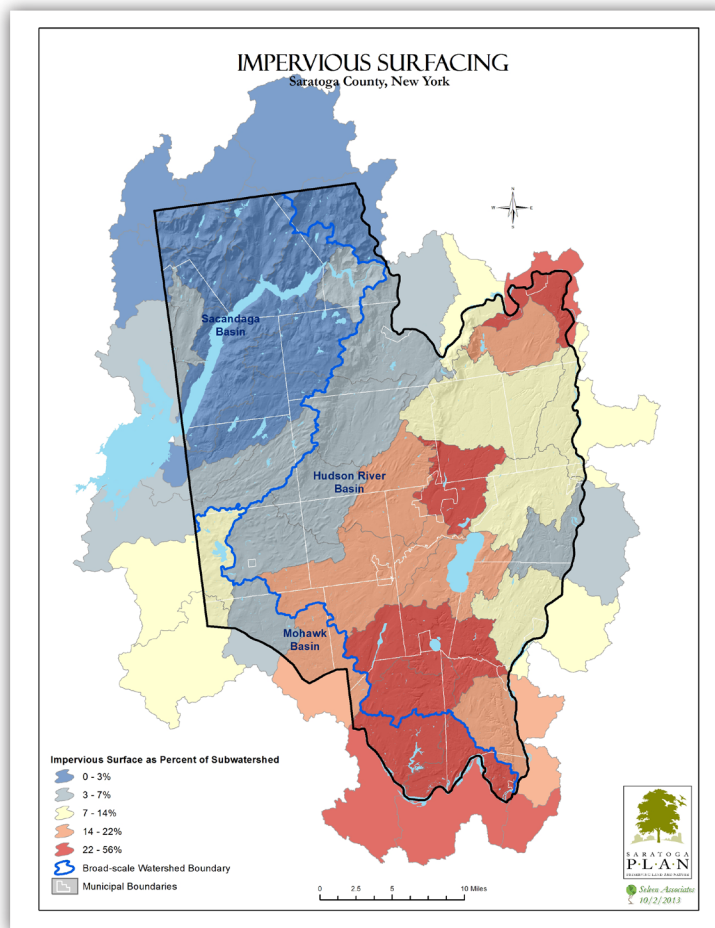
Saratoga PLAN thanks you for your support, as will future generations.

the landscape of saratoga county

In order to make more informed decisions about conservation opportunities, Saratoga PLAN has embarked on an in-depth study of the landscape of the Saratoga County region. We are trying to understand the relative quality and importance of geographic regions of the county. Conservation resources being studied in the landscape include: wildlife habitat, water resources, adaptability to climate change, trail connections, agriculture, parks and places for people, and areas of predicted growth.

Consultant Kirstin Seleen has been helping PLAN find, model, and depict data for the conservation resources at the landscape level using powerful GIS mapping analyses. With these analyses in our toolbox, PLAN will be better able to evaluate land conservation opportunities and to assist interested landowners with understanding their properties within a larger landscape context. Town boards, planning boards, educators and students, developers, farmers, and business people will also be able to use this information for their own knowledge and decision-making.

Later this fall, a series of maps with all the analyses will be posted on PLAN's website and made available for downloading. One example, shown here, is the amount of impervious surfacing – roofs and pavement - within watersheds. Impervious surfacing prevents rainwater from soaking into the ground, where it is cleansed and replenishes groundwater supplies. When rain is prevented from infiltrating into soils, water quality in rivers and lakes is affected. The more impervious surfacing in a watershed, the lower water quality in water bodies receiving the unfiltered water. When impervious surfacing in a watershed exceeds 5-10%, significant degradation occurs in water quality and aquatic habitat.



Funding for the landscape study was provided by the NYS Conservation Partnership Program, Land Trust Alliance, Community/Land Preservation and Planning Fund, NYS Council on the Arts, the PCLB Foundation, and private donors.

Thank you!

volunteers harvest invasive water chestnut from lake lonely

On Saturday, August 3rd, Saratoga PLAN hosted a hand-harvesting work day on Lake Lonely to help control the invasive aquatic plant water chestnut (*Trapa natans*). Saratoga PLAN worked in partnership with the Lake Lonely Improvement Association and Saratoga National Golf Course to manage the water chestnut infestation on Lake Lonely.



Stewardship Volunteer Lorraine Skibo led the group of 10 volunteers from the Lake Lonely Boat Livery around the eastern shore of the lake by kayak. The four-hour long harvest resulted in the removal of more than 40 buckets of the aquatic invasive plant!

upcoming events

see website for details and updates

October 12: Autumn Walk at Hennig Preserve

TBD: Bog Meadow 20th Anniversary Celebration

December 5: Holiday Gathering at the Spring Street Gallery - Photography Timeline Show for PLAN's 10th Anniversary

A huge thank you to all of our dedicated supporters and volunteers. Lasting conservation work requires considerable money and time, and without you, none of this is possible.



All of these events are family friendly in collaboration with Children & Nature Saratoga.

sundae on the farm

an annual treat for families

For 18 years, local farm families have worked together to organize a tour of a farm in Saratoga County for area children. Sundae on the Farm has grown into a cherished Father's Day tradition, offering 3,000 families the opportunity to enjoy and learn about operations and life on a local farm. This year the McMahon Thoroughbred Farm opened its stables to the public in honor of the 150th anniversary of the Saratoga Race Track. Next year, Welcome Stock Dairy Farm in Northumberland has offered to host the festival. Don't miss it!



A few notecards created by people stopping by our booth at Farm Aid. Special thanks to Skidmore art students Sage Barlow and Winnie Vaughan for artistic inspiration and instruction all day!

2013 Business Sponsors

(As of September)

BARNRAISER \$5,000+

Saratoga Harness Racing
The Adirondack Trust Company

HARVESTER \$2,500-\$4,999

Adirondack Sign Company
Advanced Manufacturing Techniques
Edward P. Swyer
New Country Motor Car Group
Peter R. Brooks CIMA, CFM

CULTIVATOR \$1,000-\$2,499

Capital Alliance of Young Professionals
Colley Asset Management
D.A. Collins Companies
Greenfield Manufacturing
King Wealth Management
Linell Lands
Merrill Lynch Wealth Management
Miller Printing
Munter Enterprises
Racing City Realty
Raymond James Financial Services, Inc.
Saratoga National Bank & Trust Company
Saratoga Photobooth
SKS Bottle & Packaging
Sneeringer Monahan Provost Redgrave
Stewart's Shops
Walter Borisenok Family Foundation

BOARD OF DIRECTORS

Katharine Petronis, Chair
John Munter, Vice-Chair
Karl Newton, Treasurer
Jenn Hunt Dempsey, Secretary
Jay Arnold
Timothy Barnett
John L. Barone, Esq.
Peter Brooks
Renee Birnbaum
Pandora Davis
George Ehinger
Keith Giles
Joe Grasso
Jackie Hakes
Casey Holzworth
Chuck Marshall
Lisa Nagle
Will Orthwein
Brad Oswald
Shane Williams-Ness

ADVISORY COUNCIL

Barbara Faraone
Charles Hanehan
Scott Miller
Libby Smith-Holmes
Martha Strohl

EMERITUS BOARD

Marsha Boelio
John Colley
Barbara L. Glaser
Ray Seymour
Julia S. Stokes

STAFF

Maria Trabka
Trisha Foster
Emily Oswald
Devin Rigolino

Saratoga PLAN is a nonprofit land trust that helps communities make long-term decisions to sustain our region as a great place to live, work, visit, and farm. PLAN assists landowners with fulfilling their conservation goals for their land and provides stewardship for over 3,500 acres of farmland, forest, natural habitat, trail corridors, historic places, and water resources in Saratoga County.

For more information,
visit www.saratogaplan.org
or call 518-587-5554



SHOW YOUR LOVE FOR PLAN!



DONATE quickly and securely at
www.saratogaplan.org



FOLLOW us on Twitter
[@SaratogaPLAN](https://twitter.com/SaratogaPLAN)



VOLUNTEER by emailing
trisha@saratogaplan.org or calling
587-5554



LIKE us on Facebook and share our
updates with your friends



RECYCLE this newsletter by passing it
on to a friend



SUBSCRIBE to our email newsletter
by filling out the form on our
website