



SARATOGA
P·L·A·N
PRESERVING LAND AND NATURE



SARATOGA PLAN 2013 ANNUAL REPORT

taking root

growing a
conservation legacy

BOARD OF DIRECTORS

Katharine Petronis, *Chair*
 John Munter, *Vice-Chair*
 Karl Newton, *Treasurer*
 Jennifer Hunt Dempsey, *Secretary*
 Jay Arnold
 Tim Barnett
 John L. Barone, Esq.
 Renee Birnbaum
 Peter Brooks
 Pandora Davis
 George Ehinger
 Jaclyn Hakes
 Casey Holzworth
 Keith Giles
 Joe Grasso
 Kelly Healy Kane
 Chuck Marshall
 Lisa Nagle
 Will Orthwein
 Brad Oswald
 Shane Williams-Ness

EMERITUS BOARD

Marsha Boelio
 John Colley
 Barbara L. Glaser
 Ray Seymour
 Julia S. Stokes

ADVISORY COUNCIL

Barbara Faraone
 Charles Hanehan
 Scott Miller
 Libby Smith-Holmes
 Martha Strohl

STAFF

Maria Trabka, *Executive Director*
 Trish Foster, *Operations Director*
 Emily Oswald, *Community Relations Coordinator*
 Devin Rigolino, *Stewardship Coordinator*

"By gathering seed from trees which are close to our homes and close to our hearts, helping them to germinate and grow, and then planting them back into their original landscapes, we can all make a living link between this millennium and the next, a natural bridge from the past to the future."

— Chris Baines

MESSAGE FROM THE BOARD OF DIRECTORS

"What we call wisdom is the result of all the wisdom of past ages. Our best institutions are like young trees growing upon the roots of the old trunks that have crumbled away."

—Henry Ward Beecher

As many of you know, 2013 marked the 10th anniversary of Saratoga PLAN. In the past decade, Saratoga PLAN has taken root in the community. Through the dedication and vision of our founding board, staff, partners, and volunteers, we have matured from a seedling organization.

2013 was a time both of celebrating past accomplishments, and of transition, as founding board members completed their terms of service and new board members and staff were welcomed. We paid tribute to PLAN's rich history as we looked to the future with the completion of an in-depth study of the landscapes of Saratoga County. The results of the study will inform and guide PLAN's decisions about future conservation opportunities, and become a valuable resource for communities as they make vital development and planning decisions.

In 2014, PLAN will continue to deepen its roots and branch out – growing its resources to provide greater opportunities to communities for conservation, education, and experiences on the land. With your help, we will continue our conservation work, ensuring current and future generations have access to local healthy food, clean air and water, and natural areas to create memories with family and friends.

As a Board of Directors, we look forward to PLAN's future and the next ten years.

—Katie Petronis, *Chair*



2003

Saratoga PLAN was formed in 2003 through a merger of the Saratoga Springs Open Space Project and the Land Trust of the Saratoga Region. Celebrating its tenth anniversary in 2013, PLAN conserves the landscapes of life by bringing people together to preserve the character and well-being of communities. By assisting Saratoga County communities and land owners with accomplishing their conservation goals for farms, forest, wildlife, water, and trails, and balance land use, PLAN helps ensure the economic, environmental and public health of the region.



Merger of Organization



Morack Farm

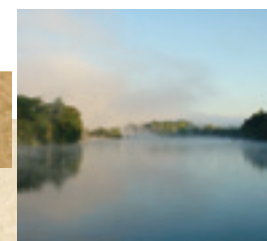


Farmers Market

2004



Spruce Mountain



Old Saratoga on the Hudson





seedlings to ancient woodlands

growing conservation in saratoga county

Saratoga PLAN proudly began and ended 2013 supporting the vision of two private landowners – tending the projects from seed to maturity. Our total stewarded acreage increased to 3,605 with the completion of a conservation easement, and we opened our twelfth public nature preserve.

the coldbrook preserve

For thirty years, Jim and Christine McKnight had a dream to conserve their 63-acre patch of forested land in Northumberland, and in December 2010, Saratoga PLAN purchased the property from the McKnights. This was merely the beginning.



It took two years to fully realize the McKnight's dream, when in the spring of 2013 PLAN officially opened the Coldbrook Preserve. It took many partners – a group from the Leadership Class of 2011 designed the trail system, and volunteer stewards help keep it in good order. Eagle Scout Drew Pelchar built a bridge for the trail to cross Cold Brook, and Kings Ransom Farm helped with excavation and backfilling for the bridge, while Stone Bridge Iron & Steel provided materials to

construct the bridge. Financial support was provided by RBC Wealth Management, the NYS Environmental Protection Fund, the Town of Northumberland and many individual PLAN donors.

With the opening of the Coldbrook Preserve, Saratoga PLAN once again helped a private landowner's vision become reality, while also protecting critical stream and wetland habitat, home to the threatened Blanding's Turtle, and creating public trails that wind their way through acres of pristine woodland.

We're proud that our role supports
the vision of private landowners.

the patricia s. whitesell conservation easement

On the last day of 2013, the Patricia S. Whitesell Conservation Easement was completed. John R. Wolfe and his late wife Patricia (Sandy) purchased the 105 acres in Galway ten years ago. They loved being outdoors on the property, and spent their time studying its ecology and enjoying its beauty. They had plans to donate a conservation easement to forever protect it as a wildlife and nature preserve.

In 2006, Sandy passed away after a three year battle with cancer. This special conservation easement was in memory of Sandy, ensuring their shared vision will be carried forward through the protection of the property's ecological, educational, historic, recreational, and scenic values for future generations.

PLAN is inspired to have helped create a lasting legacy that honors a memory, a vision, and provides the Galway community with conserved forests, wetlands, stream habitats, and trail resources for future generations.

"Sandy loved wildlife – she wanted a place where wildlife could thrive, now and in the future. Conserving this property pays tribute to the vision of the land being a refuge for nature."

– John R. Wolfe



strong roots, strong future

older easement files undergo new growth

In 2013, Saratoga PLAN's Stewardship Program both moved forward with new projects and looked back over past accomplishments. PLAN holds 27 conservation easements, including some that are over 20 years old. This past year, each easement file was updated with new materials including new property maps and photographs. Not only will these file updates make stewardship responsibilities easier, but they will also serve as reminders that it is only through caring for our roots that we can promote a future of healthy growth.



fostering growth

preserve improvements via eagle scout dedication

Saratoga PLAN is proud to work with local Eagle Scout candidates and their troop mates. This year we want to thank the scouts who improved the Bog Meadow Brook, Coldbrook, Galway, and Hennig Preserves as part of their projects. Because of their commitment, PLAN preserves have seen additions such as bridges, benches, and signage along trails.



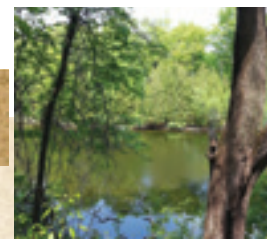
The Ndakinna Nature Preserve is the oldest Conservation Easement that Saratoga PLAN holds, officially protected in October of 1991. Though Saratoga County has seen a lot of changes in the past 20 years, the protected values of this property have not been lost thanks to Marion Bruchac and her family.



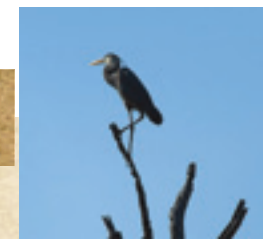
2005



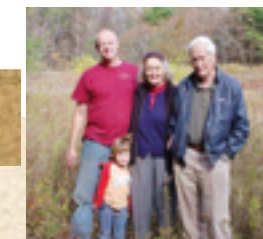
Feast of
the Fields



Galway
Preserve



Ballston Creek Preserve
and Peterson Property



Milton
Preserve



Reilly Ridge
Farm

branching out expanding trail systems

The trails network in Saratoga County is like that of the growing branches of a tree - year after year they extend their touch, creating a connected canopy of all the trees in the woods. PLAN continues to work with many partners to extend opportunities to build a countywide trail network. We're excited to share updates on a few of the many trails projects that have branched out and expanded the trail system.

RAILROAD RUN ROUTE 50 CROSSING

Ten years in the planning, the Route 50 Crossway was unveiled in June 2013 with a celebratory button pushing. The pedestrian-activated traffic light is the first of its kind in New York State. The crossing links the YMCA and Saratoga Spa State Park for bikes, wheelchairs, and pedestrians.



SARATOGA SPRINGS GREENBELT TRAIL

Included in the city's Open Space Plan, the Greenbelt Trail is a proposed 10-mile loop around the city of Saratoga Springs that connects existing trails: Spring Run, Bog Meadow, and Railroad Run for walking, running, biking, hiking, cross-country skiing, snowshoeing, and dog walking. A coalition of local organizations worked with Alta Planning & Design to develop a feasibility study for routing the Greenbelt Trail.

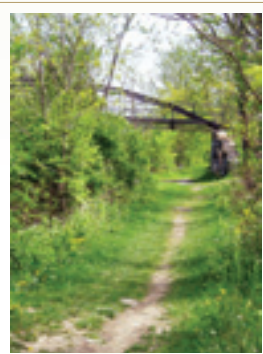


DIX BRIDGE OPENING

After four years of hard work, the restoration of the Dix Bridge was completed and officially opened to the public in October 2013. This trail completes a portion of the Champlain Canalway Trail.

CHAMPLAIN CANALWAY TRAIL

2013 saw many accomplishments for this trail system: The working group selected a firm to start designing four trail segments in Waterford, Halfmoon and Saratoga, and 6 miles of trail between Kingsbury and Fort Ann. The Working Group secured support for this project with adopted resolutions from Saratoga County, Washington County and several municipalities. In addition, the Town of Saratoga and the National Park Service obtained almost 2 miles of old canal towpath from the NYS Office of General Services for the trail. Let's not forget the 50+ riders that participated in the 2nd annual CCT Bike Tour between Schuylerville and Fort Edward.



turning sap into syrup protecting working farmland

milton farmland protection plan

With development pressures on farmland in Saratoga increasing with the population, the Town of Milton established a Farmland Protection and Preservation Committee to develop a farmland protection and preservation plan that will protect open space, viewsheds, wildlife habitats, water resources and locally grown food, help keep the tax base low, and support and encourage agriculture. Saratoga PLAN and the Saratoga County Planning Department have been working with the committee, providing resources and guidance. The town was awarded a \$25,000 agriculture and farmland protection grant in 2013 from the New York State Department of Agriculture and Markets. These funds enabled the Town of Milton to contract with Behan Planning to write the plan. Once completed, Milton will be joining other Saratoga County towns such as Charlton, Stillwater, Ballston and Moreau, who already have farmland protection plans in place or are working on theirs.

sundae on the farm

Now a cherished Father's Day tradition, Sundae on the Farm has been offering 3,000 families the opportunity to experience life on a local farm for the past 18-years. McMahon Thoroughbred Farm hosted the 2013 festival, opening its stables to the public in honor of the 150th anniversary of the Saratoga Race Track.



natural regeneration planting seeds of knowledge

Saratoga PLAN is planting the seed of conservation in current and future generations by offering a variety of ongoing outreach events that focus on learning and connecting with the natural environment. On the land or in the water, through hands-on bird walks, paddles, workshops, and hikes, we provided opportunities for everyone to explore Saratoga County's special places!

on the land

HENNIG PRESERVE OPEN HOUSE

PLAN volunteers hosted an open house of the Hennig Preserve in the fall, offering a variety of guided tours of varying lengths to educate the public on the creation of the preserve and its extensive trail system.

GUIDED BIRDING WALKS

Sometimes, when you expect to see birds, you see snakes instead! Special thanks to Jean Holcolm who led a birding walk at the Bog Meadow Preserve, and Kurt Weiskotten who led a birding walk at the Galway Preserve.



FEAST OF THE FIELDS

Since 2005, PLAN's annual Feast of the Fields fundraiser has honored the conservation heroes in our community while prestigious chefs create culinary foods from local farm products. The 2013 Feast continued the tradition, and raised over \$50,000 for land conservation in Saratoga County.

in the water

WATER CHESTNUT HAND-HARVEST ON LAKE LONELY

Stewardship Volunteer Lorraine Skibo led a group of 10 volunteers by kayak from the Lake Lonely Boat Livery around the eastern shore of the lake for a day of hand-harvesting water chestnut. The four-hour long harvest resulted in the removal of more than 40 buckets of the aquatic invasive plant from Lake Lonely!

hands-on

NATIVE LANDSCAPING

Attendees got their hands dirty with an interactive demonstration planting in Rowland Hollow Creek Preserve, and gained information and tips from our panel experts: Brooks Landscape Design, Fiddlehead Creek Farm & Native Plant Nursery, Wilton Wildlife Preserve & Park and Sandra S. Walck Garden Design. The native landscaping at Rowland Hollow Creek Preserve was maintained thanks to some hard work put in by the Skidmore Student Conservation Corps.



FARM AID

PLAN was fortunate to have been selected to host an educational booth at Farm Aid 2013 in September. We had fun, as visitors to our booth created cards to mail to their friends by drawing their favorite farm, farmer, animal, crop, barn, or tractor.

SPRING RUN TRAIL

Volunteers worked hard to clean-up debris around Spring Run Trail.

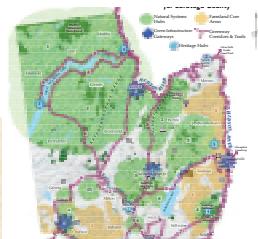


SIEGE TRAIL

Volunteers braved the rain and humidity to prepare the future public trail for a special hike as part of the Sword Surrender Site dedication on National Trails Day.



2006



Saratoga County
Green Infrastructure Plan



Greenfield Center
Preserve



Kayaderosseras Creek
Preserve and Thomas Property



Bog
Meadow

2007



Manning
Cove

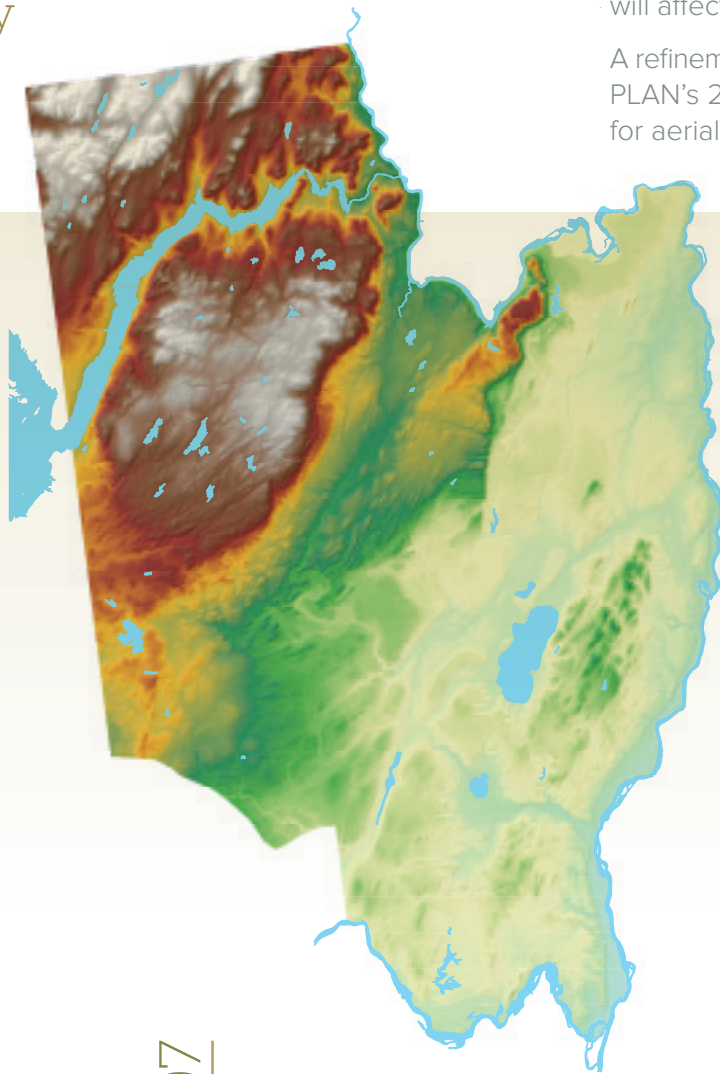


interpreting growth rings

understanding the landscape of saratoga county

PHYSIOGRAPHIC MAP

A reference to help understand the basic landform of the county through shaded topography and colored elevation; it's relatively easy to see the sandplains, the Adirondack foothills, and basic drainage pattern.



LAND COVER STATISTICS OF SARATOGA COUNTY



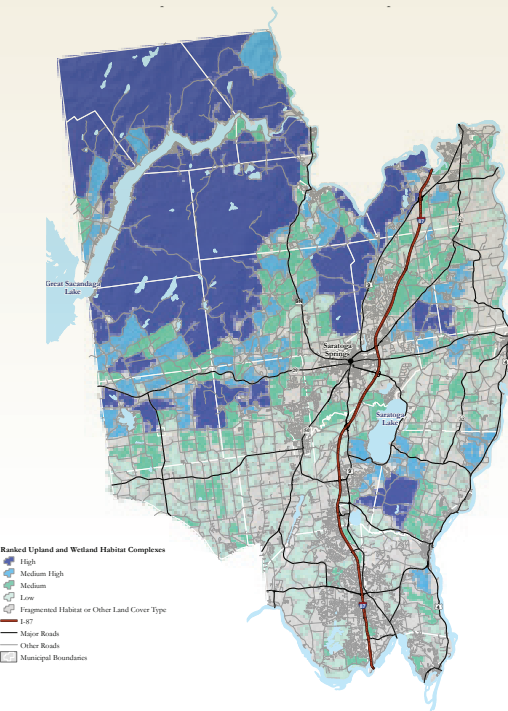
Saratoga County's Land Cover is 10.19% densely developed, 10.77% lightly developed, 10.77% agricultural, 3.4% water, 8% wetlands, and 57% uplands (woodland, shrubland).

Saratoga PLAN, through a series of geographic analyses and maps, now better understands the Saratoga County landscape it is working to conserve. We are hoping that others will use our work, too, to learn more about our lands and waters, and how land uses patterns will affect our community's options for generations.

A refinement of the county's 2006 Green Infrastructure Plan, Saratoga PLAN's 2013 landscape study used updated data and modelling for aerial photos, land uses, groundwater recharge, wildlife habitat,

NATURAL HABITATS

Upland and wetland natural habitat complexes are areas of forest, woodland, shrubland, surface water, and wetland cover, analyzed for ecological integrity, adaptability to change, and groundwater recharge.



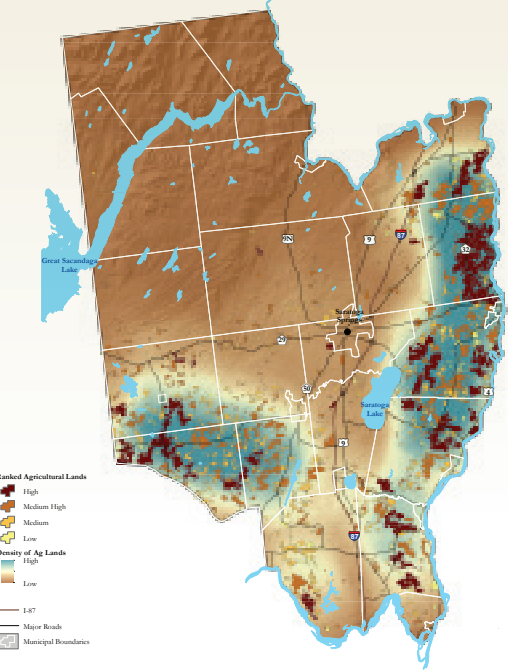
WATER RESOURCES

Depicts indicators of aquatic health and function, occurrences of rare or significant species or natural communities, regionally identified conservation priorities, and critical floodplain areas.



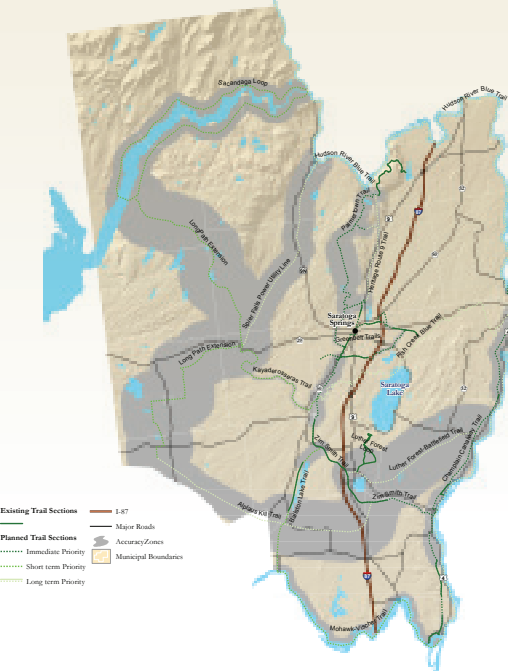
AGRICULTURAL LANDS

Patches or polygons of agricultural land were assigned a ranking based on two criteria: prime or statewide significant farmland soil (amount and percent), high groundwater recharge (amount and percent), and aggregations of active farms.



PROPOSED PRIMARY TRAIL NETWORK

Using the Trails Network in Saratoga County's 2006 Green Infrastructure Plan, this map shows the main arteries of a countywide system, the segments that are planned and those in existence.



2007



Hudson River Preserve



Zim Smith Trail

2008



Larmon Property



Corbett Property



Round Lake Preserve

a season of changing leaves

what's ahead for the next decade?

Saratoga PLAN enters its second decade prepared and positioned to assist more landowners, communities and partners with conserving the natural and working landscapes of Saratoga County. Meeting the highest standards for nonprofit management and land conservation practices, we have a set goal for 10,000 additional acres of working woodland, fertile farmland, important wildlife habitat, water resources, recreation areas, and trail corridors to be conserved in Saratoga County by 2024.

how will we accomplish our goals for the next decade?

FOCUS
We will focus our attention and technical conservation expertise and resources on opportunities presented by landowners and communities who want to conserve their properties. In addition, we will spread awareness of conservation options in specific geographic regions where they will have the most impact: Braim Woods, Palmertown Range, Adirondack foothills, agricultural areas in the eastern and southwestern portions of the county, riversides along the Hudson and Mohawk, and watersheds of the Kayaderosseras Creek, Fish Kill, Snook Kill, Anthony Kill. Likewise, we will continue to provide leadership to build a countywide trail network for recreation and alternative transportation.

PEOPLE AND PARTNERS
We are committed to retaining a people-centric organization where everyone feels like they can find a way to use their special talents and resources to contribute meaningfully to conserving the land they care so much about. We will build strong communities by convening partnerships with other nonprofit organizations, businesses, schools, and local and state governments.

COMMUNITY PLANNING
Over and over again, we've seen the power of a little planning. When a community knows what it wants to conserve, and what it doesn't, it happens!

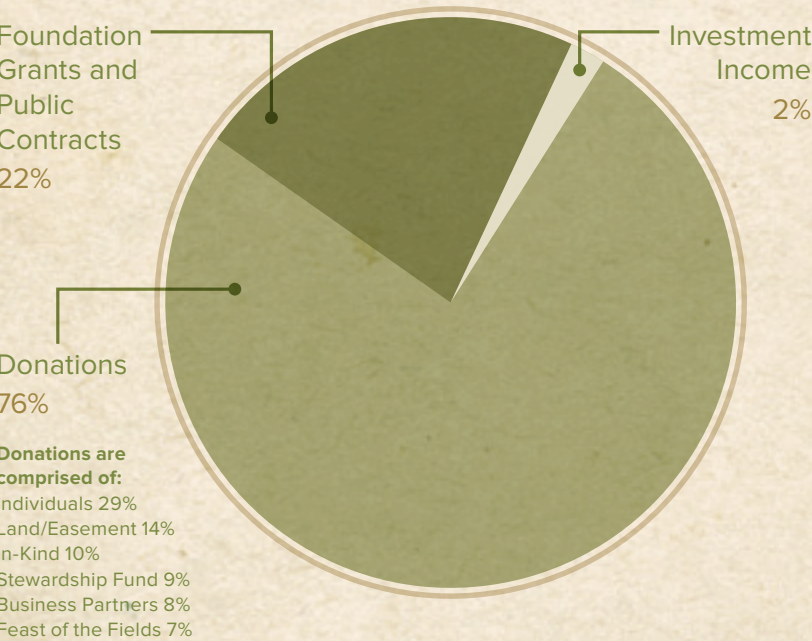
OUTREACH AND EDUCATION
Getting people out on the land to see, feel, smell, taste, explore, and experience the marvels and magic of Saratoga County's special places will form the foundation of our outreach and education activities.

FUNDING
Even a lean, mean conservation machine requires adequate resources to sustain its operations, core staff, and perpetual obligations for stewarding the lands it protects. We will unearth innovative and fun ideas to attract private fundraising and public conservation funding to accomplish our goals and exhibit the resiliency to respond to challenges and opportunities of the coming years.

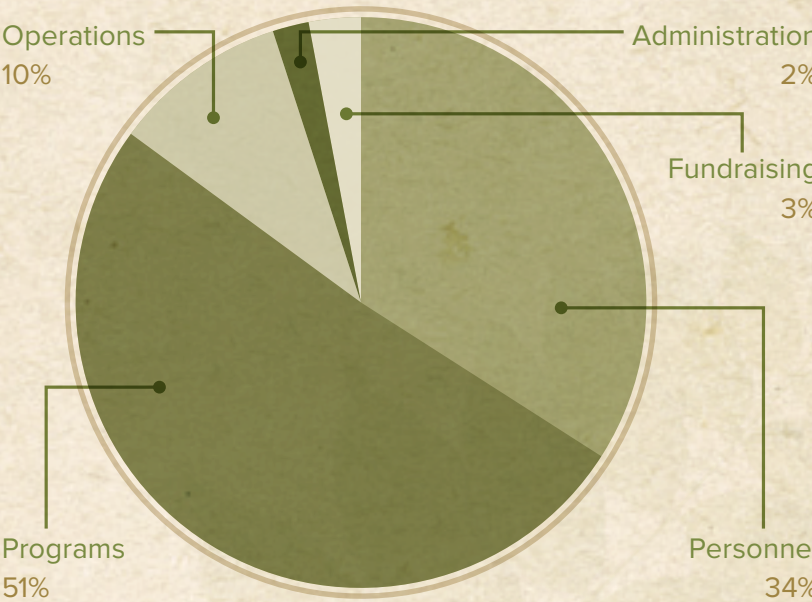
how will we know if we've succeeded?
If our great-grandchildren can swim in clean waters, eat the fish they catch, climb their favorite tree, hear an owl hooting in the early morning hours, fill their bellies with meat, eggs, milk, grains, fruits, and vegetables from local farms, ride their bikes along a trail to meet up with friends, build a birdhouse from local oak lumber, and watch quietly for the chance to snag a green frog at the water's edge, we'll know that our efforts in this coming decade were worth every minute.

2013 financial report

Revenue \$688,194



Expenses \$610,576



Notes: Saratoga PLAN's fiscal year runs from January 1 through December 31. This financial summary is derived from unaudited 2013 books. 2013 revenues of \$30,000 are contributions and grants designated for 2014 projects. Revenues of \$59,037 are contributions to the Stewardship Fund, which is required to ensure that PLAN can uphold its responsibilities as a landowner and holder of conservation easements in the future. Saratoga PLAN is a not-for-profit 501(c)3 organization and a NYS registered charity. Complete audited financial statements are available from the NYS Dept. of Law Charities Bureau, 120 Broadway, New York, NY 10271.



2009



Family Walks

2010



Creekside Farm



Hennig Preserve



Spring Run Trail and Ten Spring Woods



Ushers Rd. Karner Blue Butterfly Restoration

changing with the seasons board of directors arrivals and departures

In 2013 we bid adieu and sincerely thank four board members who completed their terms of service and gave generously of their time and talents during PLAN's first decade.

TIM BARNETT
PETER BROOKS
LISA NAGLE
BRAD OSWALD

we welcomed five new members to our board of directors.



JOHN BARONE

John L. Barone is an attorney practicing in Albany who concentrates in land use and environmental law. Through his career, and experiences as a photographer as well as occasional writer, John has strived for protection of New York's natural resources while supporting its sustainable local

economies. Now a resident of Saratoga Springs, his interest in joining PLAN's Board stems from recognizing the importance for connecting people to the open spaces that we are preserving.



RENEE BIRNBAUM

Renee has had a multifaceted career, from corporate training and development on Wall Street, to event planning, and creating a senior care services practice after both her parents were afflicted with Alzheimer's disease. Renee enjoys the great outdoors, camping, hiking, gardening, and growing

organic vegetables. She has always been active in her community and looks forward to contributing toward the realization of PLAN's mission. She believes that PLAN's advocacy and conservation efforts are vital to ensuring that the Saratoga County of tomorrow remains as wonderful and accessible as it is today, and that PLAN's conservation efforts allows everyone to enjoy thousands of acres of farmland, trails and natural environments.



JACKIE HAKES

Jackie is a farmer's daughter, and has a strong respect for land and nature. She believes that farmers are possibly some of the best stewards of land and nature, and that they rely on the land for their livelihood generation after

generation and through efforts of organizations such as PLAN to preserve farmland, farmers can continue to actively farm. As a professional community planner, Jackie works with communities to plan for a future that is environmentally and economically sustainable. For Jackie, Saratoga PLAN brings both her personal and professional interests together. She is excited to be part of such a wonderful organization that is not just a land trust, but a resource for landowners and communities.



CASEY HOLZWORTH

Casey grew up on a farm in rural PA, and holds many fond memories of agriculture. Now owning and managing a farm, and working for NYS Office of Parks, Recreation and Historic Preservation, Casey recognizes the need to conserve the working farmland of Saratoga County. To Casey, PLAN means

quality of life. He values the order and thoughtfulness of a well planned community which prioritizes thinking carefully about where and how we live. PLAN is the only organization that he knows of that's working on all aspects of that (residential communities, working lands, and natural landscapes) throughout Saratoga County.



WILL ORTHWEIN

Will owns and operates Bloomfield Farm, a 110-acre equine boarding, training and lesson facility bordering the Saratoga Polo Club. He grew up on a horse farm in Georgia and often spends time at his grandfather's horse and dairy farm in Cooperstown, NY. Will has experience in real estate and investment

management. He is excited to be a board member for PLAN and hopes to help with conservation of Saratoga's rural and agricultural nature, fundraising, and continuation of trail initiatives.

thank you

LEGACY CIRCLE

We are proud to recognize the long-term commitment of donors who have made planned gifts to Saratoga PLAN. These supporters ensure that funds will always be available to conserve farms, woods, waters, and trails for the benefit of today and future generations.

Barbara Faraone

Barbara L. Glaser
Barbara Hennig
Merry Huber
Barbara Jefts
Robin Kaska
Carolyn Malmstrom
Chuck Martin
Susan Miller
Edith Pilcher
Martha Strohl
Larry Woolbright
Meg Woolbright

FOUNDATIONS

Bank of America Foundation
Bender Family Foundation
Community/Land Preservation and Planning Fund
Community Foundation for the Greater Capital Region
Dockstader Charitable Trust
Edward P. Swyer Foundation
GE Foundation
Jane N. Mooty Foundation Trust
Nordlys Foundation
The PCLB Foundation, Inc.
Thomas and Diana Ryan Charitable Foundation
United Way/SEFA
Walter S. Borisenok Family Foundation

GOVERNMENT SUPPORT

NYS Conservation Partnership Program
NYS Council on the Arts
NYS Office of Parks, Recreation and Historic Preservation

CONSERVATIONISTS (\$10,000+)

Carole and Tom Foster
Barbara L. Glaser and Paul Zachos
Richard Higgins
Land Trust Alliance

Tom Newkirk
Julie and Bob Stokes
John Wolfe

BARNRAISERS (\$5,000+)

Adirondack Trust Company
Brad Oswald
Saratoga Casino and Raceway

CULTIVATORS (\$1,000+)

Advanced Manufacturing Techniques
Alysa and Jay Arnold
Tim and Claire Barnett
Capital Alliance of Young Professionals
Colley Asset Management, Inc.
D. A. Collins Construction Co., Inc.
David and Marsha Boello
Greenfield Manufacturing Inc.
Peter Brooks
John and Chrissy Colley
Jan King and Pandora Davis
Ella and Dennis Felcher
Keith and Kathleen Giles
Mark and Elisa Haworth
Jenn Hunt Dempsey and Steve Dempsey
Alan Justin
King Wealth Management Group, LLC
Bill and Joanna Lasher
Linell Lands
Merrill Lynch Gallant LaBarge Group
Ed Miller
John and Rosemary Munter
Munter Enterprises, LLC
New Country Motor Car Group, Inc.
Peg Olsen
Tabitha and Will Orthwein
Anne Palamountain
Katie and Mark Petronis
Racing City Realty
Raymond James
Nelson and Susan Ronsvalle
Thomas and Diana Ryan
Saratoga County Chamber of Commerce
Saratoga National Bank
Saratoga Regional YMCA
Stewart's Shops
Lorraine Skibo and Dan Chernoff
SKS Bottle & Packaging
Sneeringer Monahan Provost
Redgrave Title Agency
Claudia Sokoloff
Stewart's Shops
Martha Strohl and Thomas O'Connor

Christine Swann
Michael and Linda Toohey
Doug and Cory Ward
Florence and Wayne Wheeler
Shane and James Williams-Ness
Ethan and Anne Winter
Larry and Meg Woolbright

TRAILBLAZERS (\$500+)

Jack and Janet Beck
Renee and Eliot Birnbaum
Nancy and George Cain
Clements Insurance Brokers, Inc.
Collins Mechanical LLC
DZ Restaurants, Inc.
George and Tamie Ehinger
Environmental Design Partnership, LLP
Karen Flewelling
Free Form Fibers
Erica and Scott Fuller
James and Cheryl Gold
Barbara and Charles Hanahan
Sally Hart
Barbara Hennig
Merry Huber
Margaret and Hank Kinonian
Gail Kyler
National Grid
Karl and Suzanne Newton
Jeff and Margo Olson
Ryan Osinski
Frank Parillo
Sven and Patricia Peterson
Patrick Ryall
Ann Samuelson
Raymond and Linda Seymour
Connie and Martin Stone
Maria and David Trabka
Leonard Bus
Serge and Caroline Lussi
Julie and Charles Marshall
Charles Martin
Marvin & Company, PC
Jared Dinsmore and Kate Maynard
Susan Miller
Patricia Saunders and Richard Miller
Anthony and Joan Mitola
Frank Mitola
Maryanne Moerschell
Hilary Moynihan
Eleanor Mullaney
Christine and Peter Ness
Nancy O'Malley
Elizabeth and Karl Parker
Richard Parliman
Gordon Peters
Phinney Design Group
Alain Polynice
Jack and Lenore Reber
Carol Kautzman and Deborah Reynolds
Harold and Arlene Rhodes
Charles and Katharine Richman
Monica and Wayne Richter

SUPPORTERS (\$250+)

Abacus Information Systems, Inc.
Ellen and David Almone
Madeline Akeel
Phyllis and Sam Aldrich
Louis Alfieri and Kym Hance
Wallace and Sue Allerdice
Janet Altameri
Michele Anderson
Eleanor Mullaney
Christine and Peter Ness
Nancy O'Malley
Elizabeth and Karl Parker
Richard Parliman
Gordon Peters
Phinney Design Group
Alain Polynice
Jack and Lenore Reber
Carol Kautzman and Deborah Reynolds
Harold and Arlene Rhodes
Charles and Katharine Richman
Monica and Wayne Richter

Carrie Chalmers and Chris Morrow
David and Mary Lynn Clark
Tom and Alene Cobb
Bob Conner
Creighton Manning Engineering, LLP
Richard and Doris Daigle
deJonghe Original Jewelry
Thomas and Diane Denny
Seth Dunn
Gerriann and Gerald Eddy
Charles and Alice Evans
Maureen and Sean Fanniff
Barbara Faraone
Farm Credit East
Fil Fina
Fingerpaint
First National Bank of Scotia
Monte Franke and Patricia Duval
Kim and Cathy Franzoni
Tom Frost and Carole Tarantino
Mary Gage-Los and Jeff Los
Jon Globerson
Philip and Marie Glotzbach
Joseph and Mary Grasso
Greenman-Pederson, Inc.
Jack and Cathy Hay
Jean Hayes
Steve and Lee Howard
Jaeger & Flynn
The Jones Firm
Keith and Alice Kaplan
Edgar and Carolyn King
Thomas and Joanne Klepetar
Harold Hagemann and Susan Knapp
Norman and Christine Kuchar
Lavelle & Finn
Jeannine Laverty
Leonard Bus
Serge and Caroline Lussi
Julie and Charles Marshall
Charles Martin
Marvin & Company, PC
Jared Dinsmore and Kate Maynard
Susan Miller
Patricia Saunders and Richard Miller
Anthony and Joan Mitola
Frank Mitola
Maryanne Moerschell
Hilary Moynihan
Eleanor Mullaney
Christine and Peter Ness
Nancy O'Malley
Elizabeth and Karl Parker
Richard Parliman
Gordon Peters
Phinney Design Group
Alain Polynice
Jack and Lenore Reber
Carol Kautzman and Deborah Reynolds
Harold and Arlene Rhodes
Charles and Katharine Richman
Monica and Wayne Richter

Tom and Kristie Roohan
James and Gretchen Ruhl
Caroline Seligman and George Jolly
Robert Singer
Stack Chemical Company
Gary and Susan Snowdon
Judy Stacey
Per and Judy Staubo
The Jones Firm
The LA Group
Audrey Thompson
Robert and Lois Vessels
Susan Wendelgass and Mary Withington
David and Karin Wren

FRIENDS (\$100+)

Arlene and David Adams
Adirondack Mountain Club
— Glens Falls/Saratoga Chapter
Renee Akeel Rosebrook
Jeff and Heath Ames
Florence Andersen
Arket Electric
Judy and Grady Aronstam
Bill Asay
Phyllis Bader Borel and John Borel
Frederick and Sheelagh Bailly
John Barone
Kevin Bartlett
Chris Bartow
Cynthia and John Behan
Donald Benfer
Jeff and Sheri Bigelow
Karen Bilowith and Stephen Romero
Bradley Birge
Natalie and Ken Bollerud
Boyce & Drake Co., Inc.
Jennifer Brady-Connor
Janet Britt and John Dojka
Rosamond Butler
Bill and Robin Byrt
Capital Tractor Inc.
Milda Carroll
John and Adrienne Cetner
In Chieh Chen
Laura Childs
Jennifer Clermont
CL King & Associates
Devra Cohen and Uwe Tigor
Dan Collins
Donna and Donald Colosimo
Cynthia Corbett
Kathleen Corbett
David Cornell
JoAnn Cote-Round
Courtyard Saratoga
Dan and Marion Craine
Lisa Nagle and Bruce Cranston
Denton and Jean-Marie Crocker
Cudney's Launderers & Dry Cleaners
Charles and Darlene Curtiss

Bill and Susan Dake
Robert and Suzanne Daly
Lori Davis
John DeCamp
James DePasquale
Jennifer and Jeff DeWeese
Britt Dittrich
Jacqueline Donnelly
Jean Dugan and Ben Ford
Robert and Pamela Duncan
Anita Dunn
Sacheverel and Roberta Eldrid
Mary and Robert Ellsworth
Exceeding Expectations
Nancy Fairbanks
Fish Creek Rod & Gun Club
Bruce and Cathy Fleming
Rita and Dan Forbush
Jean Dugan and Ben Ford
Fordham University
Leslie Forester
Trish Foster
Robert and Nell Fraser
Marcus and Julie Fuller
Kathleen and Andy Fyfe
Matt Gabryshak
Elizabeth Gallagher
Kathryn Gallien and Kenneth Hapeman
Glennville Hills Garden Club
Gerard Glowinski
David Godette
Stephan Godlewski
Ken Gold
Pat and Bruce Goodale
Allen Goodman
Mark Graver and Lela Doyle
Bill and Holly Grande
James and Joanne Grande
Fayal Greene
Cheryl and Ken Grey
Nancy Hamill Winter
Kerry Hanlon
Harold Harple
Keith Hopkins and Eileen Harren
Susan and Lawrence Hatalsky
JoAnn Hedges
John and Susan Heim
Thomas Nelson and Ann Henderson
William Hetzer
Lisa and Chuck Hodgson
David and Jennifer Hoffman
Mark and Linda Hoffman
Nuhar Jaleel
Jeremy Jones and Tracy Savage
Katrina Trask Garden Club
Tom Kershner
Andy Roy and Debby Kidalowski
Lorna Kircher
Linda Koe
Kim Poli and Theodore Laddis
Marti Laird
Michelle and Daniel Larkin

Annete Decresce-Lawson
and Mark Lawson
Beverly Lazar and Peter Davis
Jeffrey Leon
Shirley and Roy Lerman
Sandy and Tom Lewis
Chris Lincoln and
Tammara Van Ryn-Lincoln
William Lorensen
Robert Gilston and Patricia Lyell
Suzanne Lynch
Michele Madigan
Marshall & Sterling Insurance
Peter Martin
Loretta and Daniel Martin
Elliott and Cathy Masie
Jane Mastaitis
Joseph Mastrianni
Christian Mathiesen
Bea McMorde
Marc and Cathy Meacham
Ron and Jackie Medaglia
Stephanie Melvin
Douglas Meyer
Gina and Peter Michelin
Matthew Miczek
Nicholas Miller
Hubert Miller
Harry Moran
Victoria and Norman Morey
Brooks Morgan
Charles Morrison
Paul Tucker and Maggie Moss-Tucker
Michael Murphy
Douglas Wildes and Julia Nalwalk
New York State Electric & Gas Corp.
Lisa Nevarez
Amelia Nigro
Mary Alice and Michael Nyhan
Anne O'Brien
Winifred O'Connell
Henrietta O'Grady
Erin O'Grady-Parent
Michael O'Rourke
Mike and Julie Ortiz
Robert and Josephine Pasciullo
Marcia Pasquito
Bill and Sandy Perrone
Michael and Liz Phillips
Tara Pleat
Leeanne and Gary Raga
Ravenous
June Rickard
Shelley and Stephen Riley
AC and John Riley
Kenneth Robbins
Neil and Catherine Roberts
Nancy Roberts
Donald Robertson
Glenn and Deborah Rockwood
Roy and Gayle Rotheim
Suzanne and Bob Sand

2011



Van Arnum
Farm



Coldbrook
Preserve



Nature Preserve
Passports

2012



Rowland Hollow
Creek Preserve



Wing Road
Farm



thank you

Dee and AJ Sarno
Jennifer Savino
Katherine Scharff
Karen and Bernhard Scholz
Kurt Schumann
Hellen Kaczor and Kenneth Schwartz
Anne Schwartzman
Beth Sciumeca
Jean Seiler
Mikel Shakarjian
Steve Sheinkin
Todd and Lisa Shimkus
Gerald and Robyn Silverman
Thomas Siragusa
Phyllis and Richard Sleeper
Robert Smith
Tim Holmes and Libby Smith-Holmes
Joyce Solitis
Betsey and William Sutton
Larry and Leah Sweeney
Janet Talley
Adam Taylor
Assemblyman James Tedisco
and Mary Song
Teakwood Builders
Regina Ten Eyck
Jennifer and Brian Thomas
John Thomas
Patricia Tuz
Kate Van Buren
Mary Caroline and John Van Der Veer
Van Jan Cabret's Inc.
Marge Van Meter
Karen and John Vanderhorn
Victoria Vetsch
Jason and Heather Ward
David Wasser
Jeffrey Whiteside
Lauren Wickizer
Brent and Linda Wilkes
Dolores Wilson
John Winnick
Carrie Woerner
Dan and Carol Wojcik
David and Connie Wood
Joanne Yepsen
Sandra and Will Zwink

OTHER DONATIONS

Virginia Adler
Bernice Allison
Charles and Ellen Alsdorf
Johanna Anderson
Hellen Kaczor and Kenneth Schwartz
Wayne and Janice Arnold
Sarah Ashton
Nur Atalay
Frances Baker
David Balbian
Benjamin JW Baskin
Frank and Nancy Berlin
Hannah Blake
David and Joy Blanchet
Amy Bloom
Jacqueline Bokus
Jim and Jan Bornheim
Samantha Bosshart
David and Jennifer Braucher
Betsy Braun
Edward Brown and Elizabeth Harrigan
Bob and Rose Burke
James Cielello and Marcia Goldfeder
Claudia Carman
Chuck Cefalu
Peter and Dorothy Chynoweth
John and Mary Lou Collyer
Catherine Commerford
Michael Cosby
Helen and Bill Crawshaw
Richard Daleo
Maureen and Larry Dana
Allen David
Phil and Judy Dean
Ellen deLalla
David Wasser
Jeffrey Whiteside
Lauren Wickizer
Brent and Linda Wilkes
Dolores Wilson
John Winnick
Carrie Woerner
Dan and Carol Wojcik
David and Connie Wood
Joanne Yepsen
Sandra and Will Zwink

Lynn Flanagan
Bernard Forman
Abigail Foster
Nancy Fritch
Melinda Fuller
Gabe Anderson Consulting
Alvin and Gay Gamage
Carol Glansberg
John Nicholson and Amy Godine
Jeffrey and Margaret Gorss
James Gould
Paul and Virginia Griffen
Jackie Hakes
Robert and Margaret Hall
Rick Fenton and Hollyday Hammond
George Hansen
Gary and Elizabeth Harker
Jane Harrington
Howard and Emily Hart
Selma and Gilbert Harwood
Patricia Hasbrouck
Kristen Heide
Marcie Horowitz
Marge Ingram and Joel Goodman
Terry Ivy
Barbara Jefts
Nancy Johnson
Jay Rogoff and Penny Jolly
Dorothy Kellilher
Bob and Rose Burke
James Cielello and Marcia Goldfeder
Claudia Carman
Chuck Cefalu
Peter and Dorothy Chynoweth
John and Mary Lou Collyer
Catherine Commerford
Michael Cosby
Helen and Bill Crawshaw
Richard Daleo
Maureen and Larry Dana
Allen David
Phil and Judy Dean
Ellen deLalla
David Wasser
Jeffrey Whiteside
Lauren Wickizer
Brent and Linda Wilkes
Dolores Wilson
John Winnick
Carrie Woerner
Dan and Carol Wojcik
David and Connie Wood
Joanne Yepsen
Sandra and Will Zwink

Emily and Brien Muller
Lee and Eva Nagel
Kimberly and Chris Neher
Zoe Nousiainen
Elizabeth O'Connor
Marne Onderdonk
Emily Oswald
Ronald Owen
Richard Parliman
Carolyn and John Peck
Ellen Pemrick
Kimberly Perez
Patricia Peterson
Steve Groseclose and Jael Poinak
David and Helen Porter
Patek and Andrew Kelly
Lester Ramsdill
Lee and Cynthia Reeves
Lori Reed
Philip and Kristine Reynolds
Karen and Patrick Ricci
Alexandra Riccio
Devin Rigolino
Dave and Mary Roberts
Jay Rogoff and Penny Jolly
Sandra Rohner
Anne and Peter Rokeach
Gordon and Mary Sacks
Myrna Sak
Gene and Ellen Salerni
Helmut and Erika Samide
Paul and Nancy Sausville
Virginia Sawicki
John Schneider
Ruth and Tom Schottman
Ann Settel
Elisa Sheehan
Robert and Susan Simons
Marne Skinner and Jim Letts
Bill and Susan Dake
Christianne Smith
Lori Squadere and Todd LaRoche
Anita Stabrowski
Barbara Sutherland
Shauna Sutton
Lorraine Thompson
Dave Torrey
Susan Trabka
Nancy Trimbur
Anne Van Acker
Robert Van Liew
Holly Vegas
Matthew Veitch
Bill Wakefield
Susan Weissner
Jacqueline Westa
Donald Whitbeck
Robert and Joyce Wickizer
Elaine Winslow
Karen Zanni
Janice Zurbrugg

IN MEMORY OF...

Ann A. David
Allen David
Dell Thompson
Audrey Thompson
Maryanna Milton
John and Carolyn Peck
Joanne Donnan
People's Resource Center Staff
& Volunteers
Ralph and Nancy Caparulo
Rosamond Butler
Lynn Schumann
Kurt Schumann
Claudia Sokoloff
Frances Birnbaum
Renee and Eliot Birnbaum

Tim Kyler
His Family

IN HONOR OF...

Barbara L. Glaser
Ann Samuelsun
Christine Swann
Roy and Gayle Rotheim
Katie Petronis
Connie and Martin Stone
Gordon Sacks
CL King & Associates
Julie Stokes
Edgar and Carolyn King
Michael and Linda Toohey
Maria and David Trabka
David and Marsha Boelio
Rob and Peg Hall
Bill and Susan Dake
Cindy Litts
Elisa Sheehan

Alan, Mark, and Derek Johnston
Kathleen Kohler

Jim and Christine McKnight
Lorraine Thompson

Marsha Boelio
Marcie Horowitz

Adam Goodman
Marge Ingram and Joel Goodman

Jim and Ginny Walker
Ralph and Nancy Caparulo

Natalie Walsh and the Community Garden
Nancy Fairbanks

Frank Lombardo
Nur Atalay

M. Elizabeth Coreno
The Jones Firm

Conservation Heroes

Each year we honor individuals who permanently conserve their own property or who exhibit extraordinary leadership or volunteer service to achieve conservation in Saratoga County.

Our 2013 Conservation Heroes were honored at a reception at Feast of the Fields and received a handmade birdhouse decorated by a local artist at a reception.



TIM BARNETT for his leadership of the Adirondack Nature Conservancy.

MARLENE AND ALAN BISSELL for their leadership at Hudson Crossing Park.

CASEY HOLZWORTH for his leadership at New York State Office of Parks and Historic Preservation and on PLAN's Stewardship Committee.

TOM RICHARDSON for his leadership of the Historic Hudson-Hoosic Partnership and Board of Supervisors Trails Committee.



Railroad Run /
Rte. 50 Crossover

IN-KIND DONATIONS

195 Factory
3 Dogs Barking Farm
3-Corner Field Farm
Adirondack Aquaponics
Adirondack Buffalo Co.
Adirondack Connections
Adirondack Sign
Adventure Sports Rafting
Allerdice Rental
Alpine Sport Shop
Alta Planning and Design
Anderson Acres
Anna Mae's Homemade Jams
Argyle Cheese Farmer
Battenkill Creamery
Bob Cohan
Bob Lee, The Brook Tavern
Brian Bowden, Javier's
Brookfield Renewable Power
Buckley Gent McDonald & Cary, PC
Carla and Eric Kuchar, Zest Catering
Champlain Canal Tour Boats
Chazen Companies
Children's Museum at Saratoga
Chris St. Hilaire, Systems Integrity
Consider Bardwell Farm
Dave Pedinotti, Mouzon House
Denison Farm
Elihu Farm
Elisa Sheehan, LIS Design
Empire State College
Excelsior Springs
Fil Fina and Coyote Aviation
For Earth's Sake
Fountain Square Outfitters
Four Seasons Natural Foods Store
and Café
Gardenworks Farm
Greenfield's Forever
Greenman-Pederson, Inc.
Harvest & Hearth
Healthy Living Market and Café
High Peaks Cyclery
Highland Deer Farm
HMT at the Spa Little Theater
Homestead Artisans
Jack Beck
Jay Saunders, Prime
at Saratoga National
John Colley
Kate Edwards
Katie and Mark Petronis
Kelsey's Quarter Acre Farm
Kilpatrick Family Farm
Kim Klopstock, Lily and the Rose
and 50 South
King Brothers Dairy
Kirstin Seleen
Knight Orchards
Lake George Distilling Company
Lake Placid Distillery
Mark and Holly Lawton
Lewis Waite Farm
Little Fields Farm



Saratoga Springs
Greenbelt Study

Wing Road Farm
Winney's Blueberries
Wishing Well
Wyndbourne B&B
Yono Purnomo, Yono's Restaurant

VOLUNTEERS

Jay Arnold
Sage Barlow
Jackie Bave
Joanna Bebbler
John Barone
John Barnett
Frank Berlin
Renee Birnbaum
Joy Bixby
Nate Blanks
Marsha Boelio
Geoff Bornemann
Peter Brooks
Jess Collette
John Collyer
Peter Brooks
Pleasant Valley Farm
Cathy Corrigan
Bruce Cranston
Culinary Students of WSWHE BOCES
Paul Moyer
Joshua Cummings
Laura Rose Dailley
Pandora Davis
Kim Dellis
Tim Demers
Joseph Denning
Jackie Donnelly
Jennifer Dorsey
George Ehinger
Wally Elton
Peter Fedorick
Larry Felpel
Fil Fina
Jeff Finkle
Jeanette Fitz
Cathy Fleming
Abby Foster
Emm Foster
Mary Gage Los
Ellie George
Keith Giles
Andrew Gillcrest
Peter Goutos
Dot Gray
Peter Gray
Joe Grasso
Jackie Hakes
Kym Hance
Barbara Hanehan
Charles Hanehan
Anita Harris
Tim Harris
Tom Harris
Walt Hayes
Erin Healy
Kelly Healy Kane
Ann Henderson

Tom Henderson
Barbara Hennig
Jean Holcomb
Kelly and Casey Holworth
Joseph Hovis
Jenn Hunt Dempsey
Barbara Jefts
Parker Jensen
Laura Johnstone
Nicole Kempton
Mazzone Hospitality
Melina Iacovone
Miller Printing and Litho
Mountain Man
Nancy Holzman, Good Morning Café
Native Farm Flowers
Nettle Meadow Farm
North Creek Railway
Old Chatham Sheepherding Co.
Old Iron Spring Stables
Olde Saratoga Brewing Company
Pack Paddle Ski
Peter Brooks
Pleasant Valley Farm
Cathy Corrigan
Bruce Cranston
Culinary Students of WSWHE BOCES
Paul Moyer
Joshua Cummings
Laura Rose Dailley
Pandora Davis
Kim Dellis
Tim Demers
Joseph Denning
Jackie Donnelly
Jennifer Dorsey
George Ehinger
Wally Elton
Peter Fedorick
Larry Felpel
Fil Fina
Jeff Finkle
Jeanette Fitz
Cathy Fleming
Abby Foster
Emm Foster
Mary Gage Los
Ellie George
Keith Giles
Andrew Gillcrest
Peter Goutos
Dot Gray
Peter Gray
Joe Grasso
Jackie Hakes
Kym Hance
Barbara Hanehan
Charles Hanehan
Anita Harris
Tim Harris
Tom Harris
Walt Hayes
Erin Healy
Kelly Healy Kane
Ann Henderson

Jacqueline Parker
Ray Pasieka
Benjamin Pennell
Ken Perez
Katie Petronis
Jael Polnac
Karen Rafalik
Matthew Reals
Arlene Rhodes
Dusty Rhodes
Eric Rice
Emily Roy
Jim Ruhl
Laura Sakala
Cliff Samson
Anne Schwartzman
Gaby Shearer
J'Mae Shemroske
Cathy Sikora
Lorraine Skibo
Skidmore College
Amy and David Smith
Cheryl Smith
David Smith
Libby Smith Holmes
William Sorel
Julie Stokes
Martha Strohl
Chris Templin
Michael Triller
Fordham University
Winnie Vaughan
Nick Voickmann
Takeyce Walter
Don Washburn
Shane Williams-Ness
Susan Wemple
Bryan Whalen
Cynthia Whalen
Jim Witte
Peter Zach



Whether you're an individual, volunteer, foundation, business partner, or partner organization, your support makes our work possible. You are helping to conserve the farms, woods, waters and trails of Saratoga County. We truly appreciate each and every one of you and wish to acknowledge your contributions. Inevitably, some names are missed or misspelled. We sincerely apologize. PLEASE let us know!



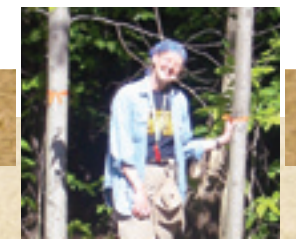
Foster Sheep
Farm



Malta Trolley
Line



Understanding the Landscape
of Saratoga County



Patricia S. Whitesell
Conservation Easement

"To be without trees would,
in the most literal way, to
be without our roots."

– Richard Mabey



SARATOGA
P.L.A.N.
PRESERVING LAND AND NATURE

112 SPRING STREET
SARATOGA SPRINGS, NEW YORK 12866
518.587.5554 PHONE
518.587.4054 FAX
WWW.SARATOGAPLAN.ORG

Photography by: Jackie Donnelly, Linda Eastman, Josh Gerritsen, Bob Lippman, Jim McKnight, Amber Osterhout, Tom Schottman, Julie Stokes

